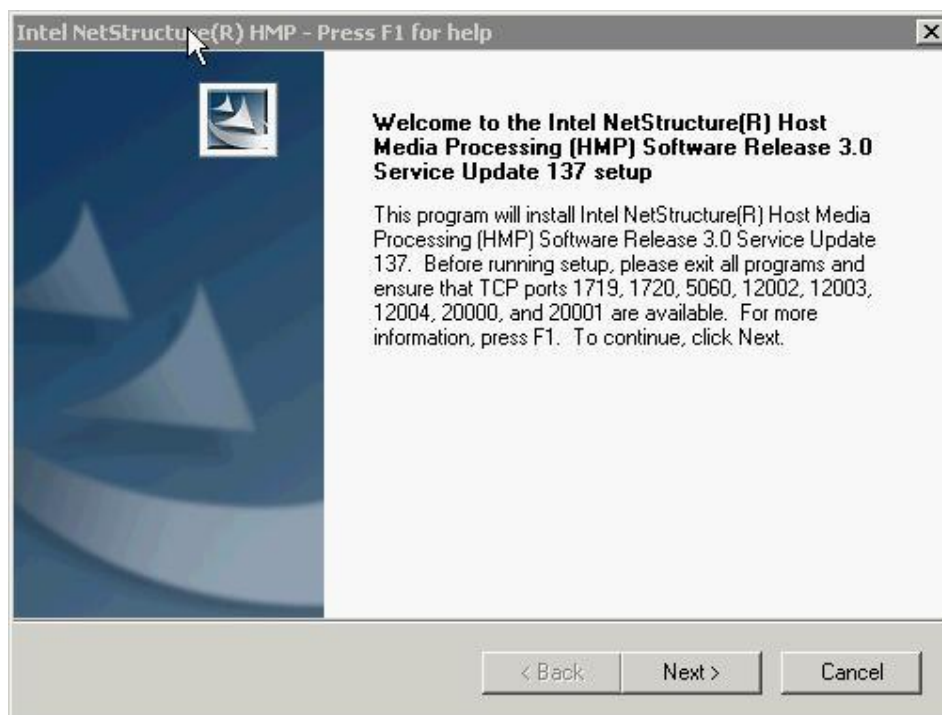


## How to run Contarra® Cameleon system on Dialogic® Host Media Processing

Follow next detailed steps to have working Contarra® Cameleon system on top of Dialogic® HMP for Windows.

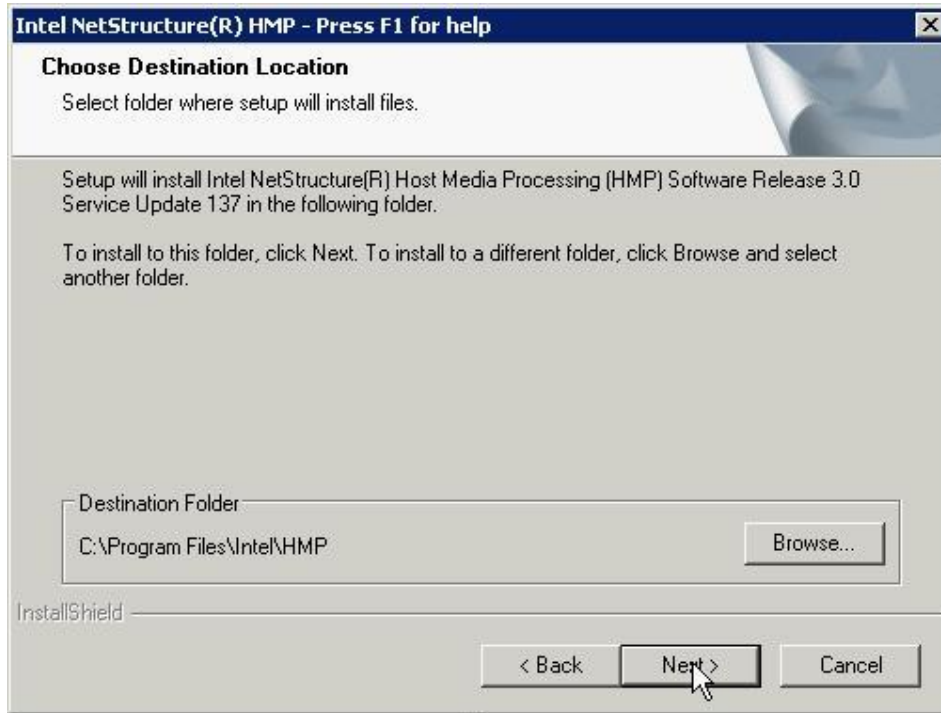
### 1. Installation of Dialogic® HMP 3.0 for Windows

Dialogic® Host Media Processing (HMP) Software performs media processing tasks on general-purpose servers without requiring specialized hardware. The software provides media services for building flexible, scalable, and cost-effective next-generation IP media servers and converged telephony applications. Because it is implemented as a software-only product with a variety of media processing configurations, Dialogic HMP software minimizes investment, development, deployment, and operational costs.

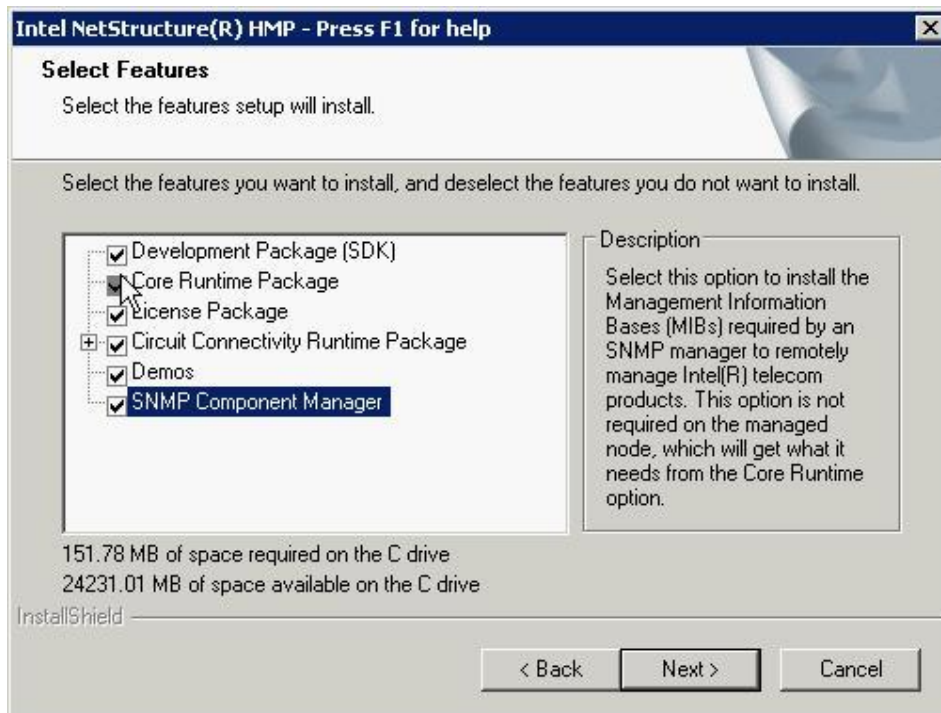


1. Download Latest SU (service update) for Dialogic® Host Media Processing from our ftp (<ftp://ftp.ctipro.cz/>) or directly from Dialogic® website: <http://www.dialogic.com/support/helpweb/dxall/HMPWin/hmp30/default.htm>

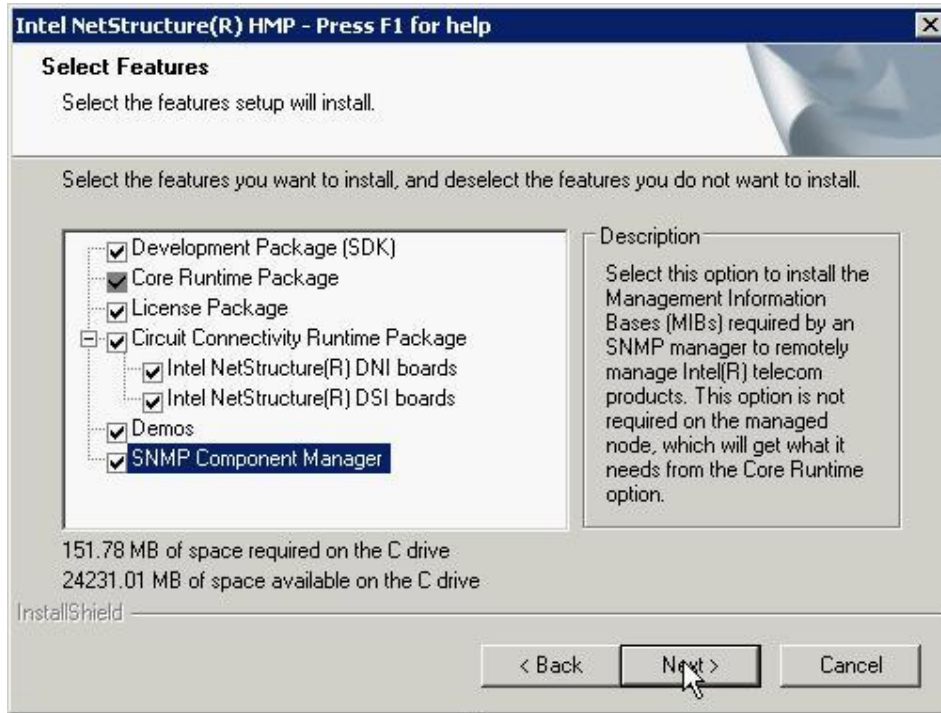
Run Setup.exe



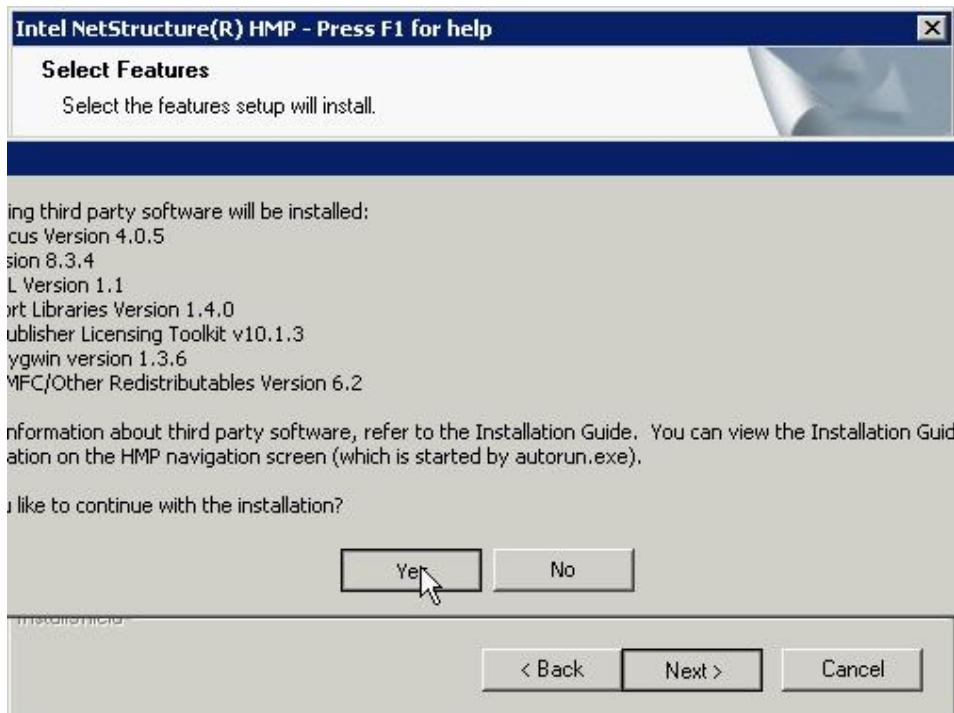
2. Install HMP to default location.



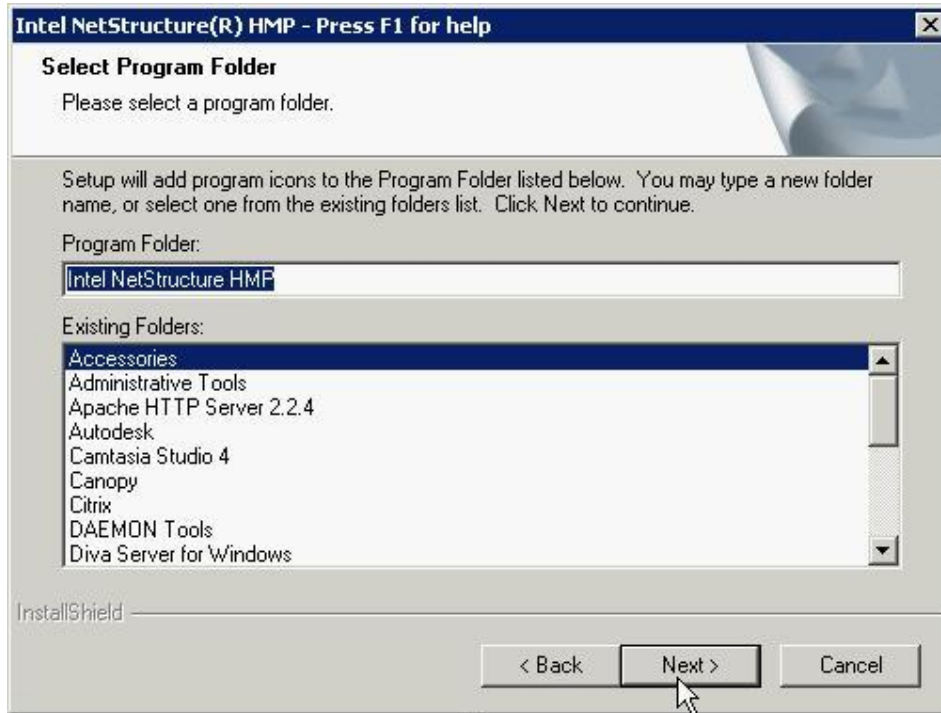
3. Select all features to be installed.



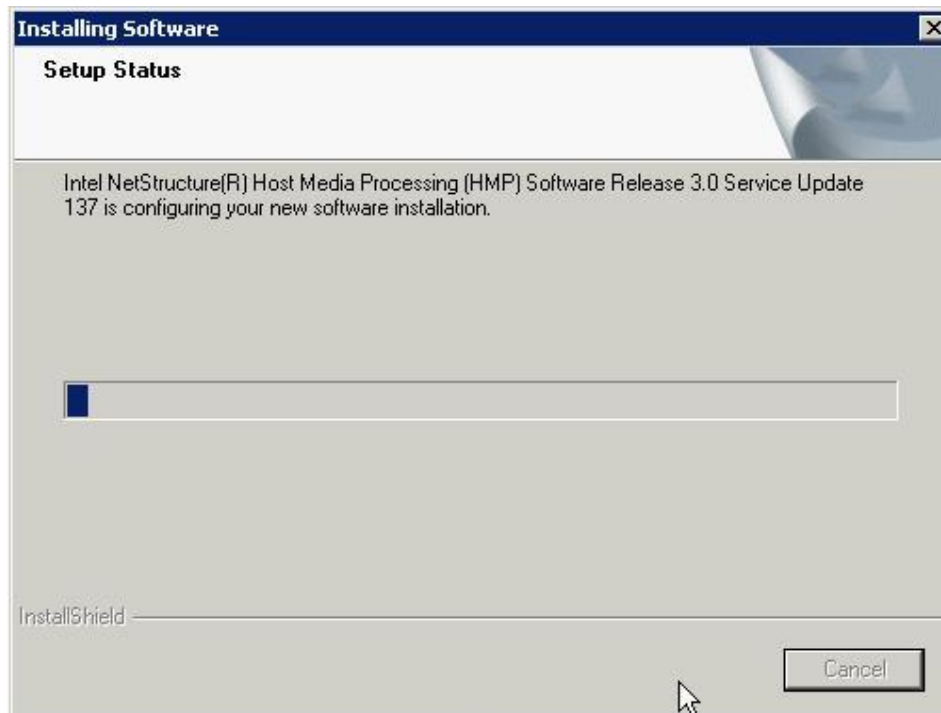
4. Verify features setting.



5. Confirm installation of 3rd party software.



6. Select default program folder.



7. Begin installation.



8. Reboot after installation program finish.

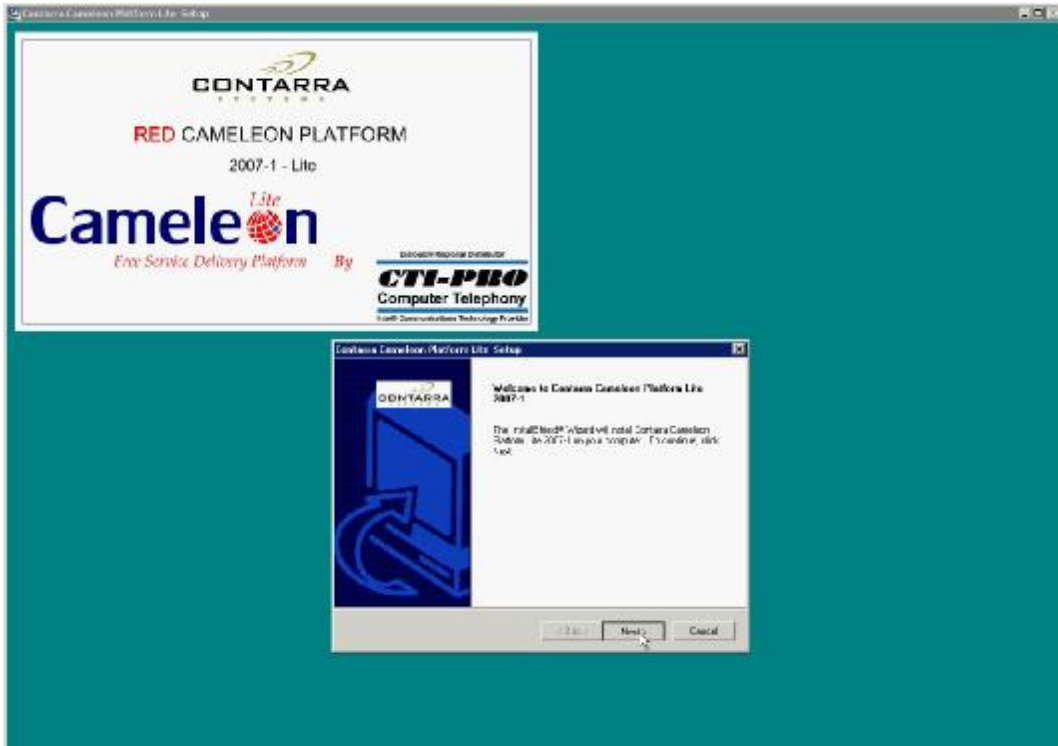
## **2. Installation of Contarra® Cameleon 2007-1 Special CTI-PRO® LITE edition**

In the telecommunications industry today customers demand rapid development of high quality voice applications and therefore rely heavily on supporting technology that can provide a solid basis for their operations. Now, Contarra has built its Converging Communications Platform (Cameleon) to meet the customer's demands in the changing telecom industry. Cameleon is intended for both companies that demand carrier-grade solutions or entrylevel systems. Cameleon is a state of the art solution. Cameleon is unique in its open architecture and scalability.

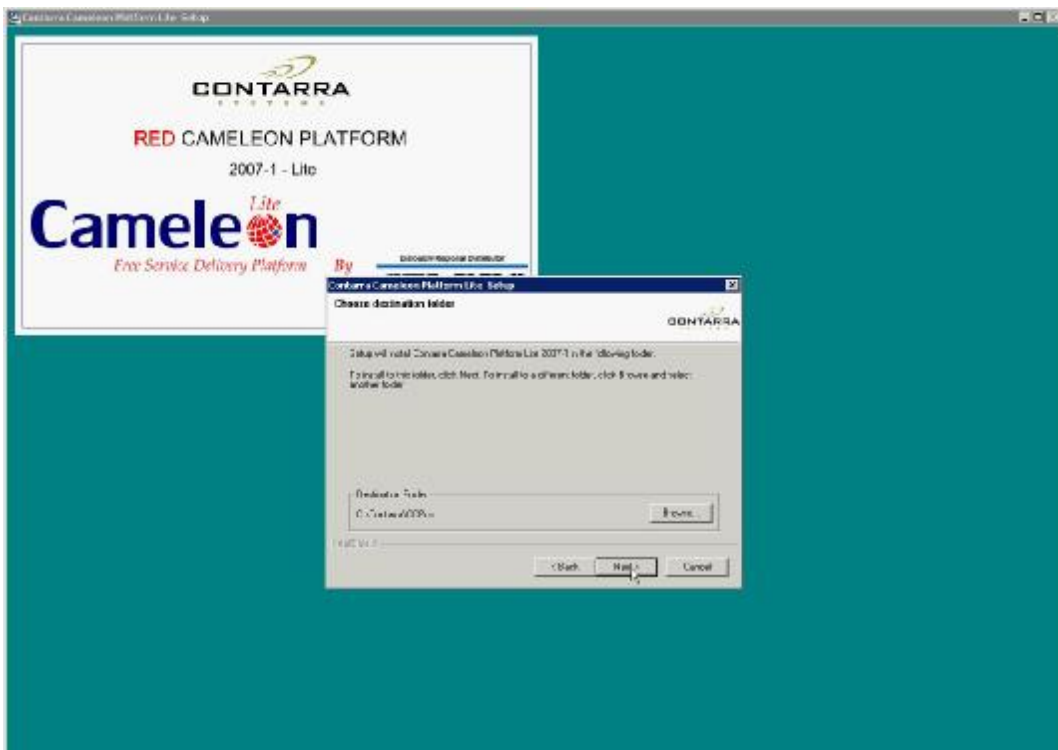


1. Download special LITE version from our FTP:  
[ftp://ftp.ctipro.cz/pub/Contarra/CCP\\_2007\\_1\\_Lite\\_CTI\\_Pro.exe](ftp://ftp.ctipro.cz/pub/Contarra/CCP_2007_1_Lite_CTI_Pro.exe)

Run main package .exe to begin installation.



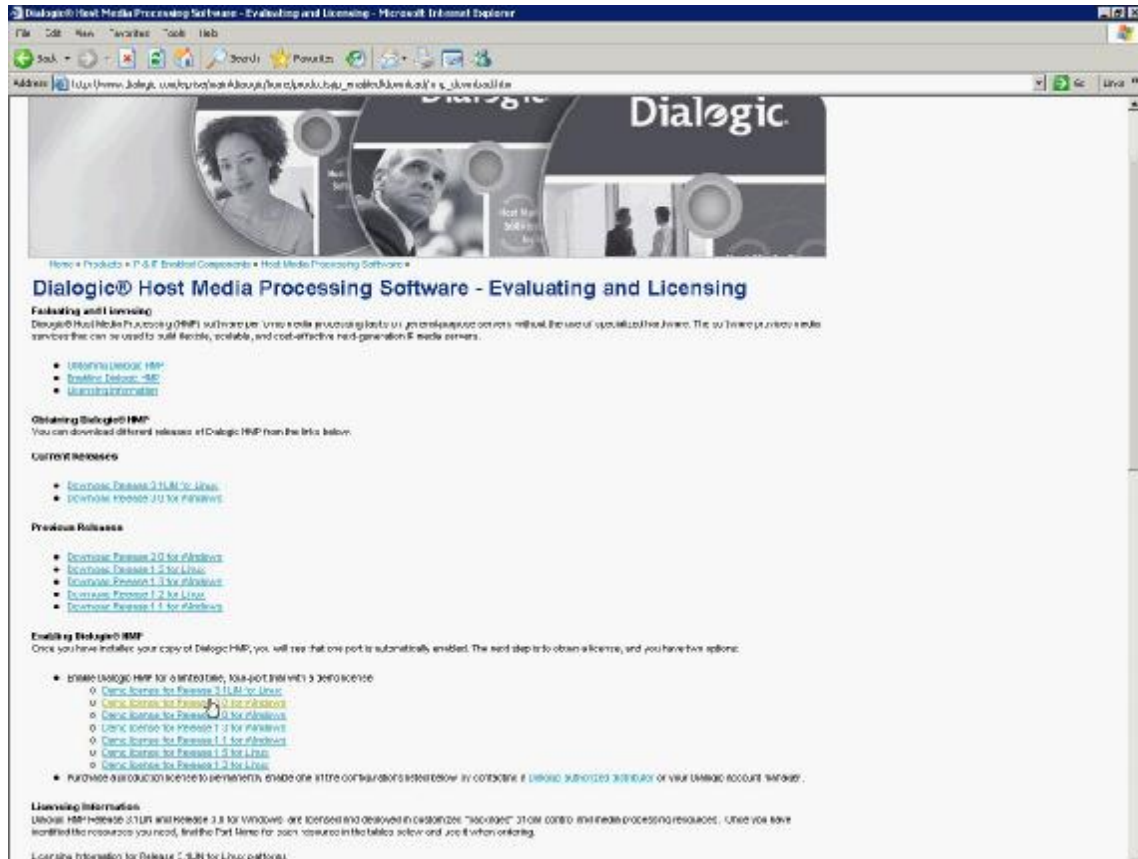
2. Click on next and accept license agreements.



3. Choose default destination directory.



### 3. Setup of Dialogic® HMP and Contarra® Cameleon

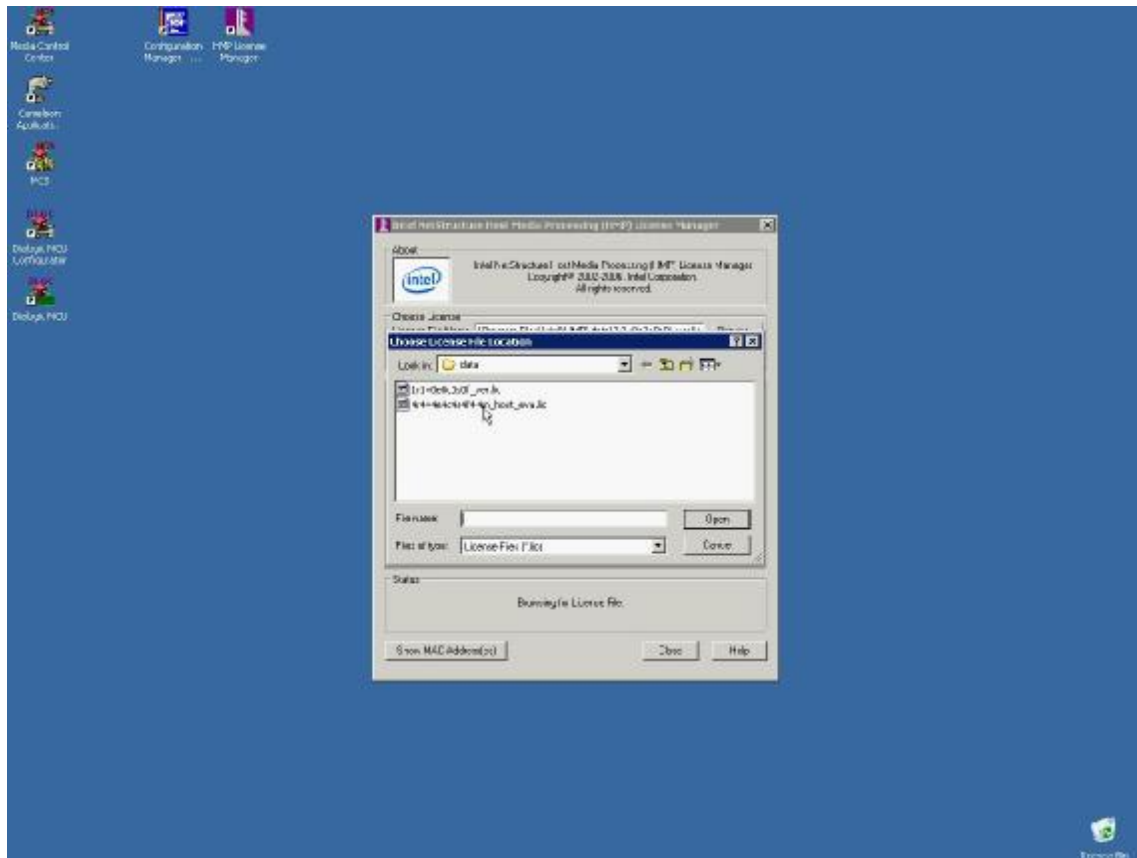


1. First of all we have to download from Dialogic® website trial (45 days 4 ports) license for HMP 3.0 Windows. The licenses are located here:  
[https://prodcenter.dialogic.com/maint/download\\_trial.aspx?product=HMP30W](https://prodcenter.dialogic.com/maint/download_trial.aspx?product=HMP30W)





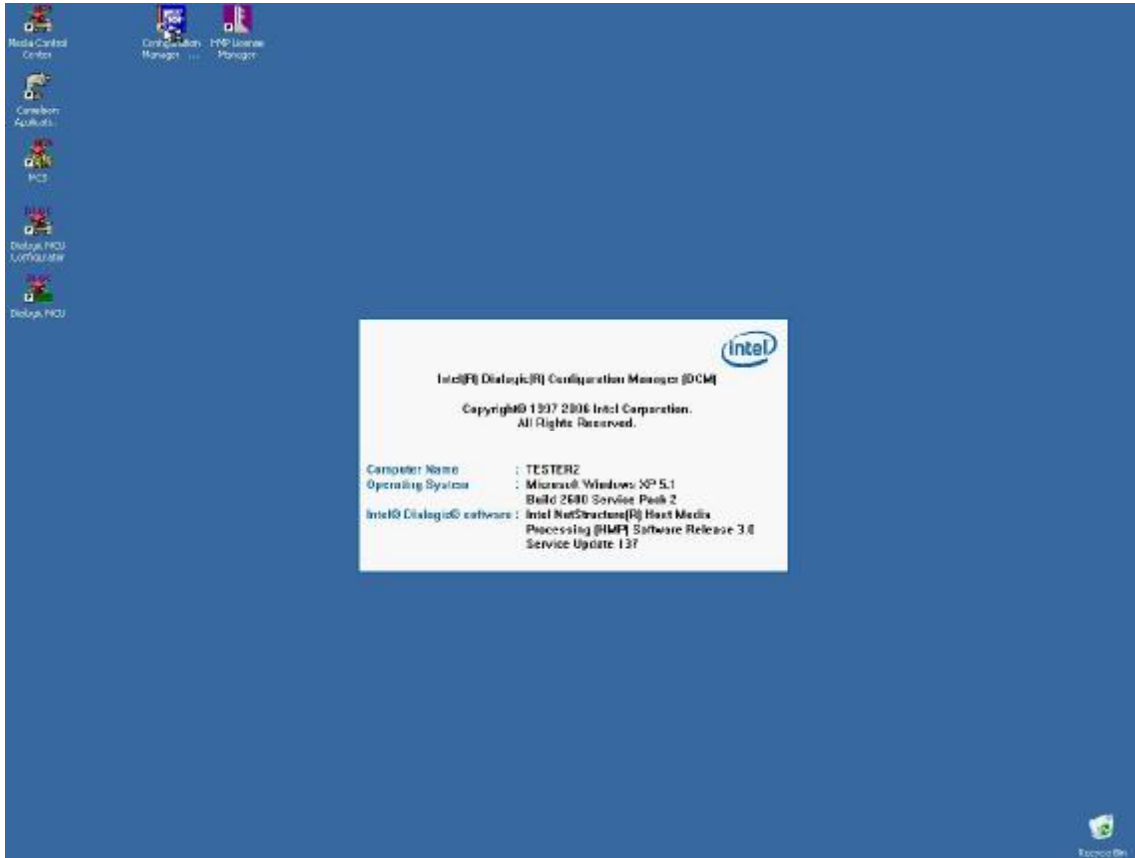
3. To activate downloaded license we have to run License Manager. License manager is in the same program folder like HMP.



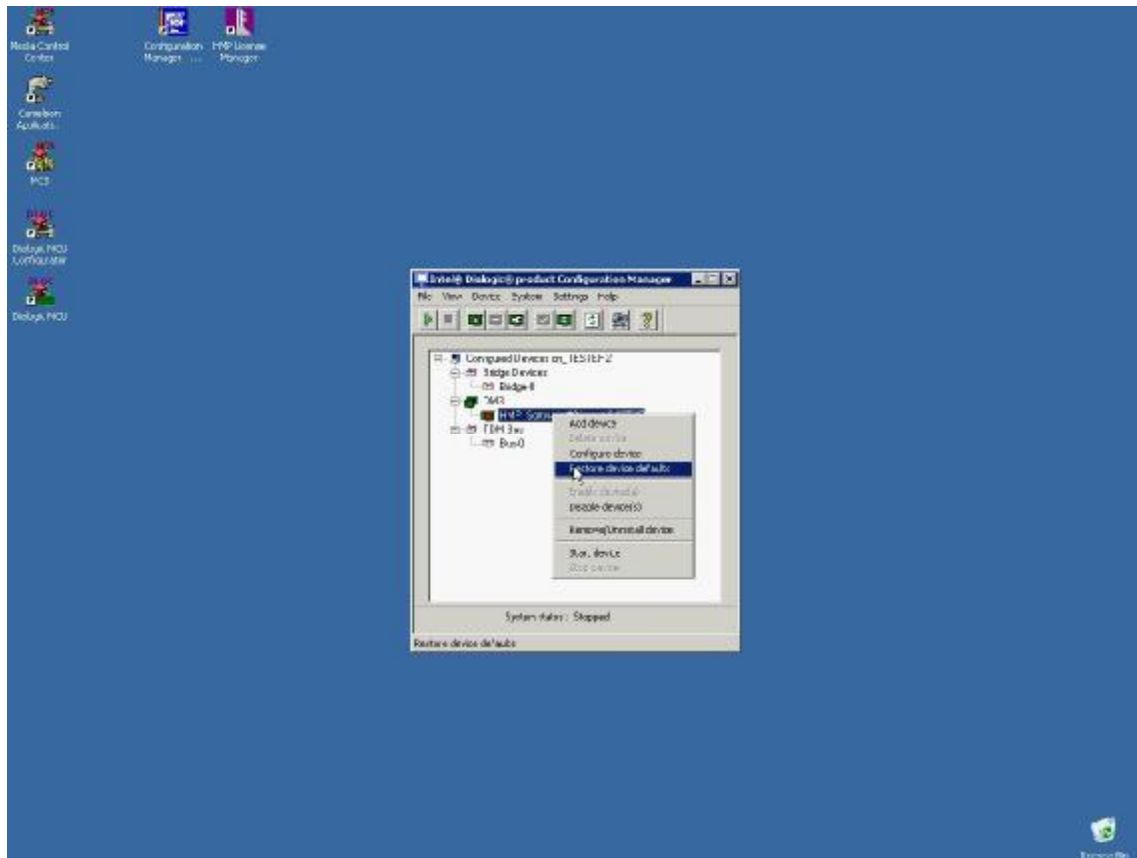
4. Browse for downloaded .lic file and select it.



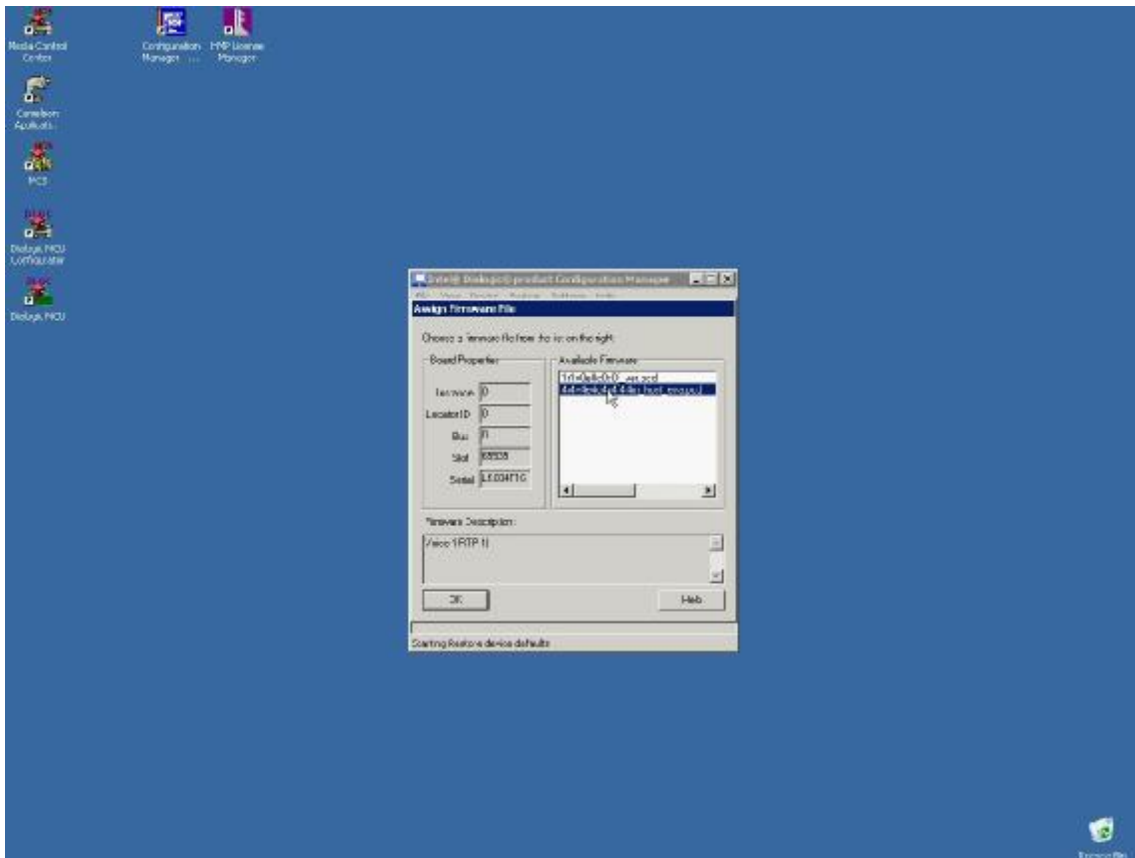




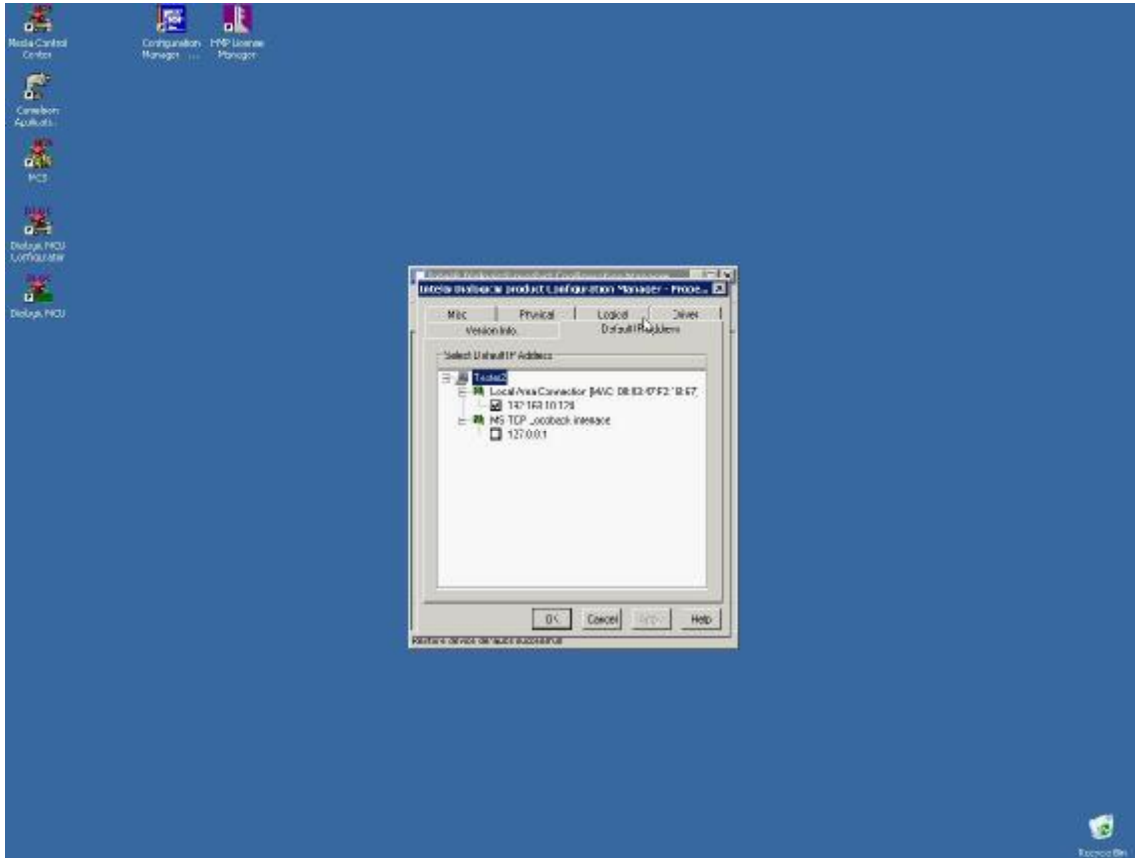
7. Start HMP software now.



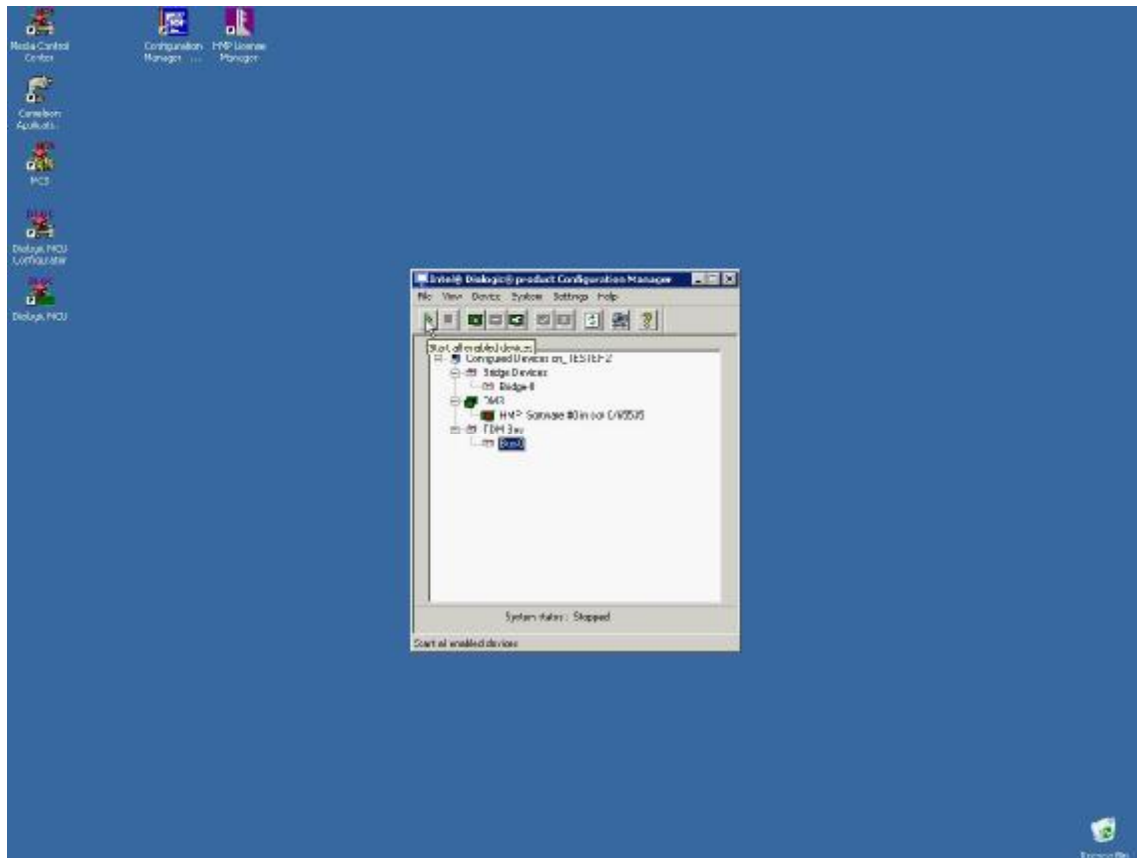
9. Right-Click on HMP instance inside Configuration manager a select „Restore Device defaults“ to choose right activated license.



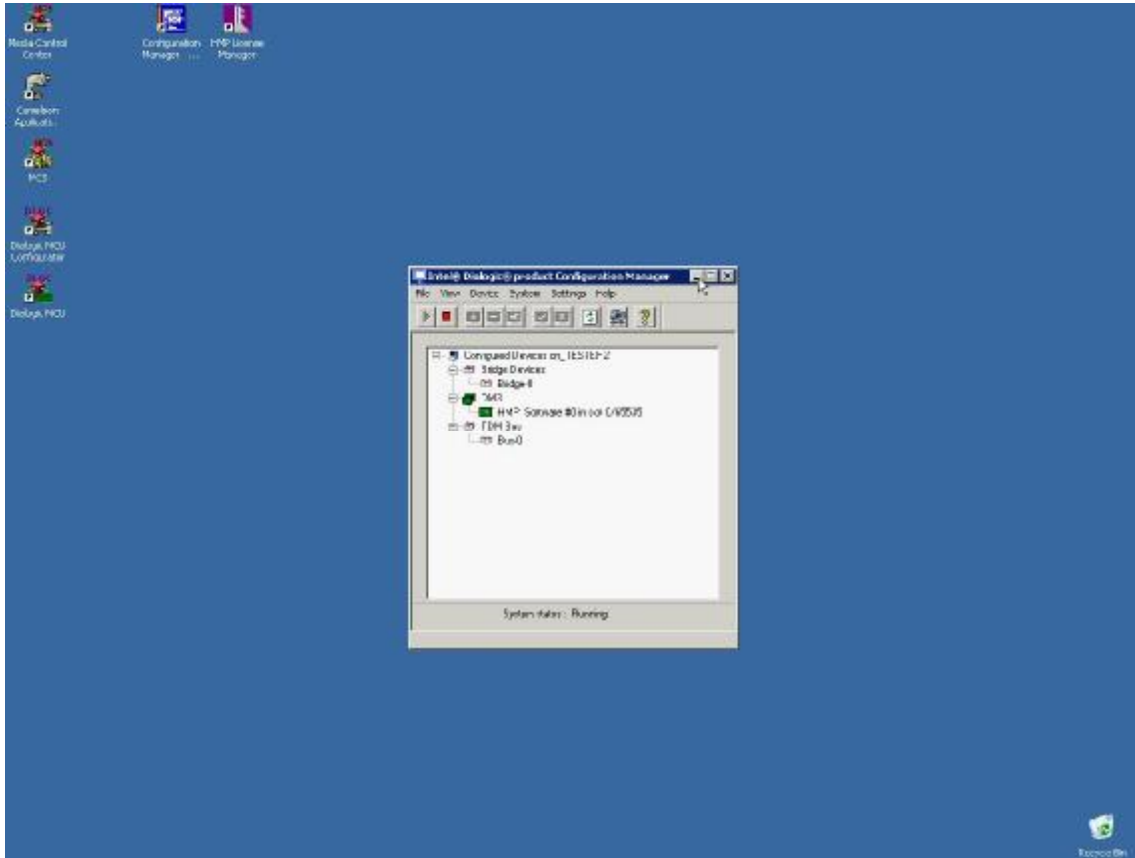
10. Select new 4 port license and confirm this setting.



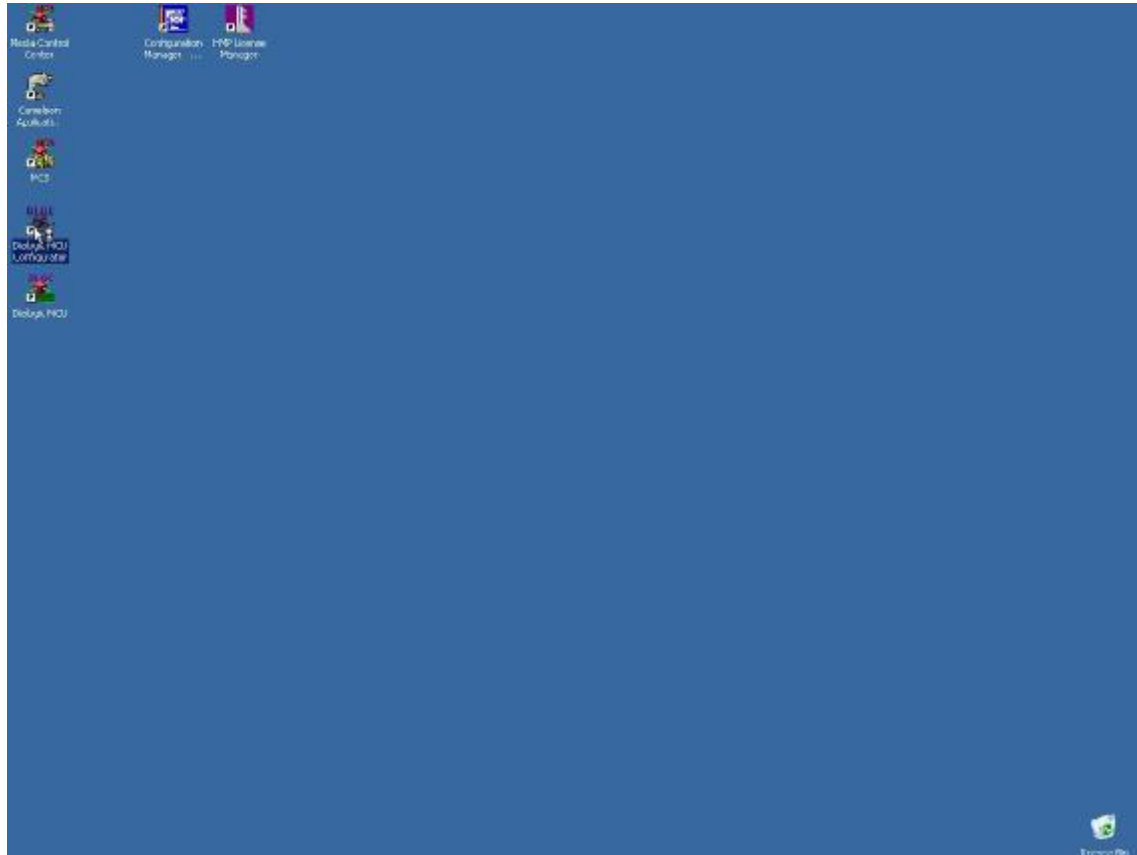
11. Now you can (by clicking on HMP instance) set some additional features of HMP. Important is „Default IP Address“ tab where you should verify that HMP uses the right IP interface in your PC.



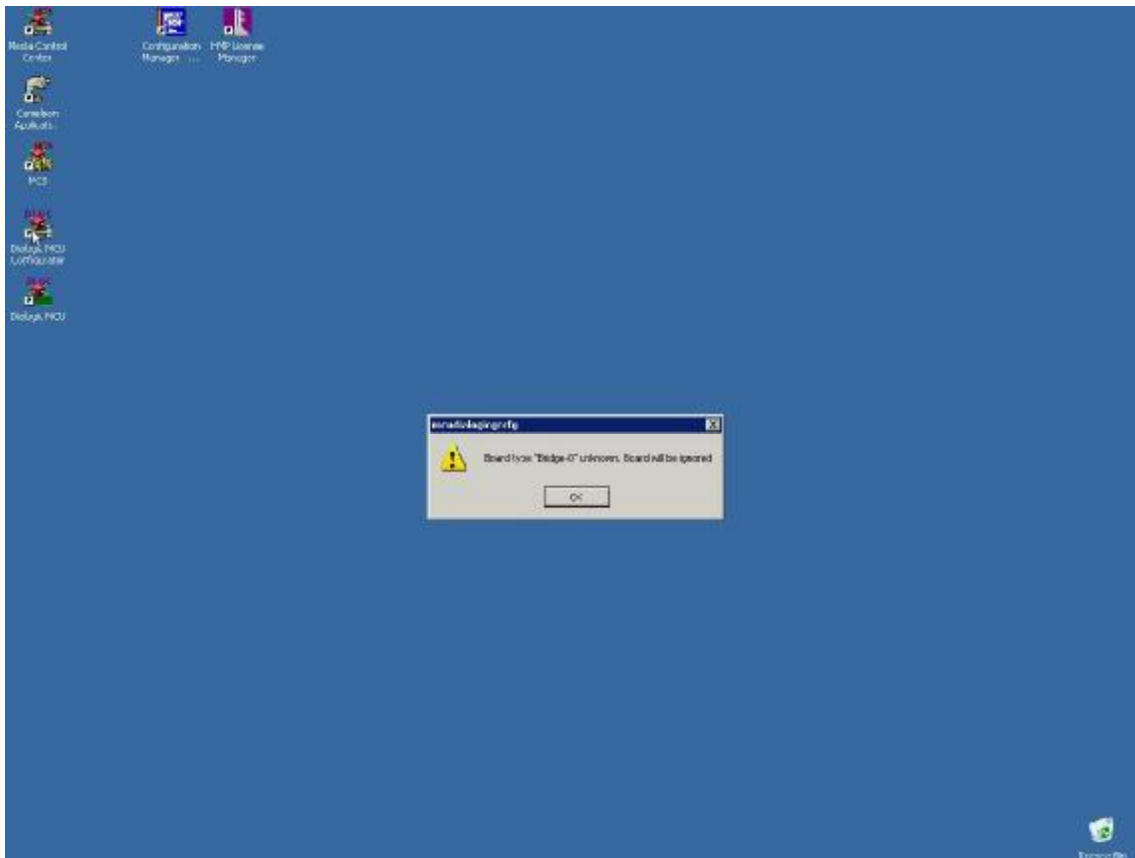
12. Now you can start HMP software clicking on green arrow on the toolbar.



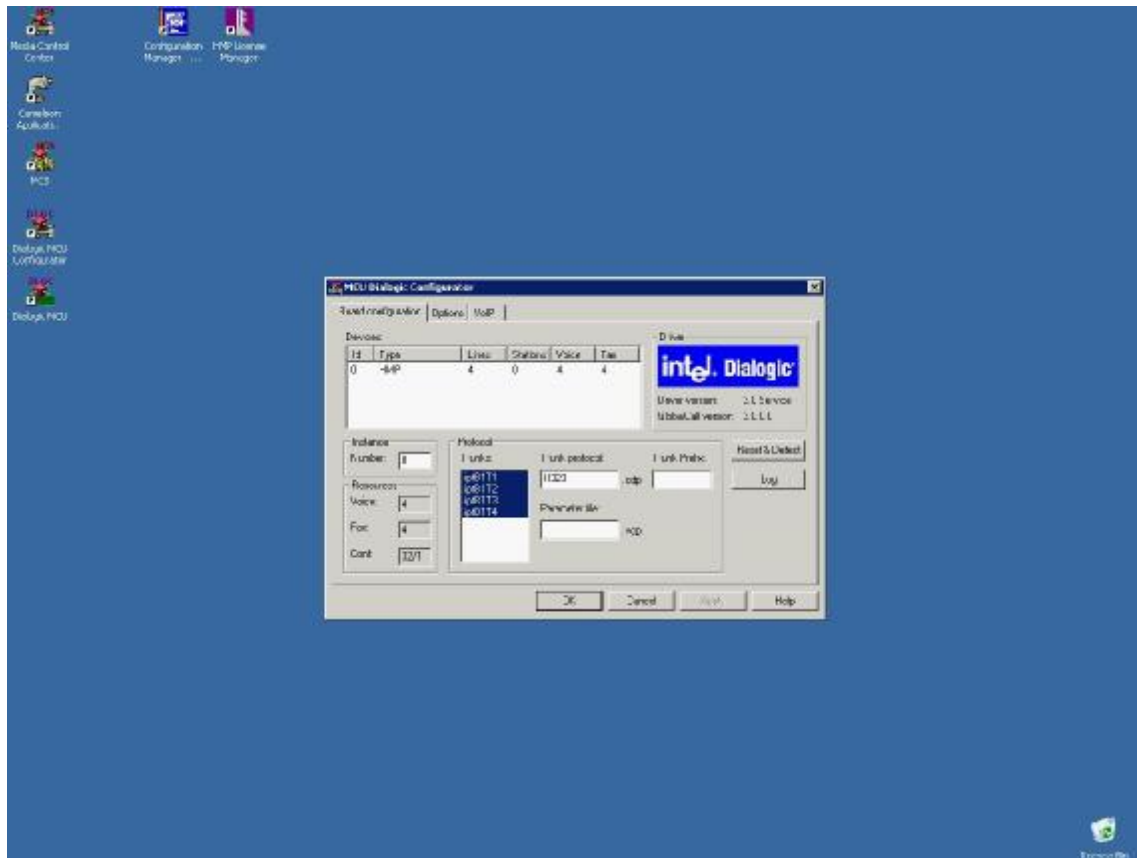
13. Icon on HMP instance should become green after a while and status should change to „Running“. If not you should take a look in to event log of your system to see what is wrong.



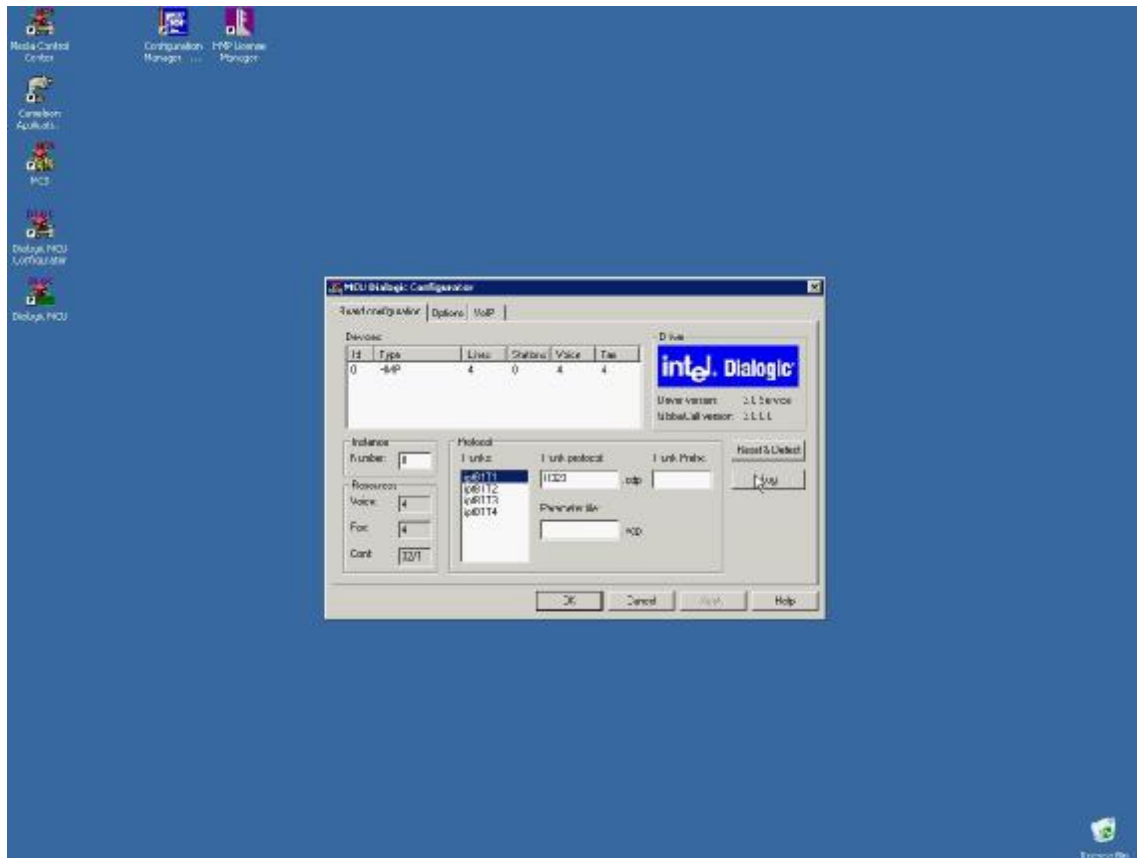
14. HMP is running so we can move to setup Contarra® Cameleon software now. Click on „Dialogic MCU configurator“ first.



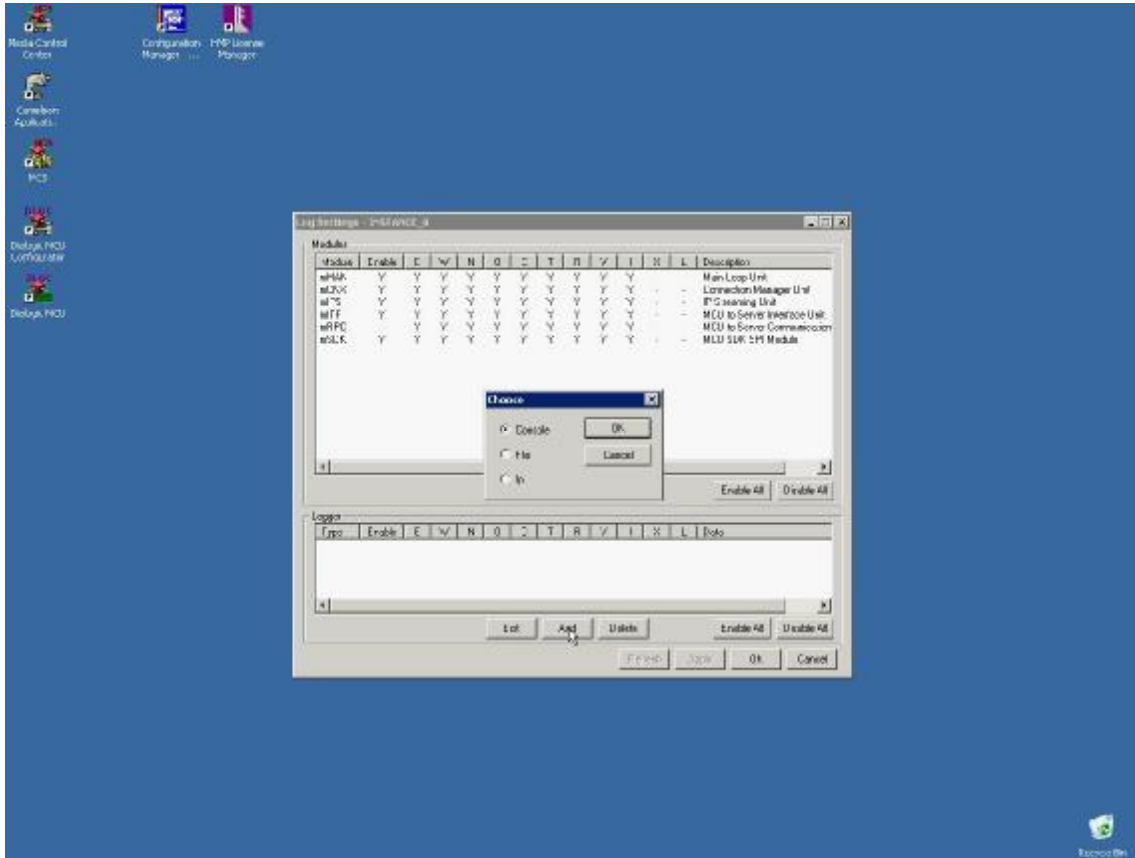
15. You should see warning message regarding HMP Bridge. You can ignore this and continue.



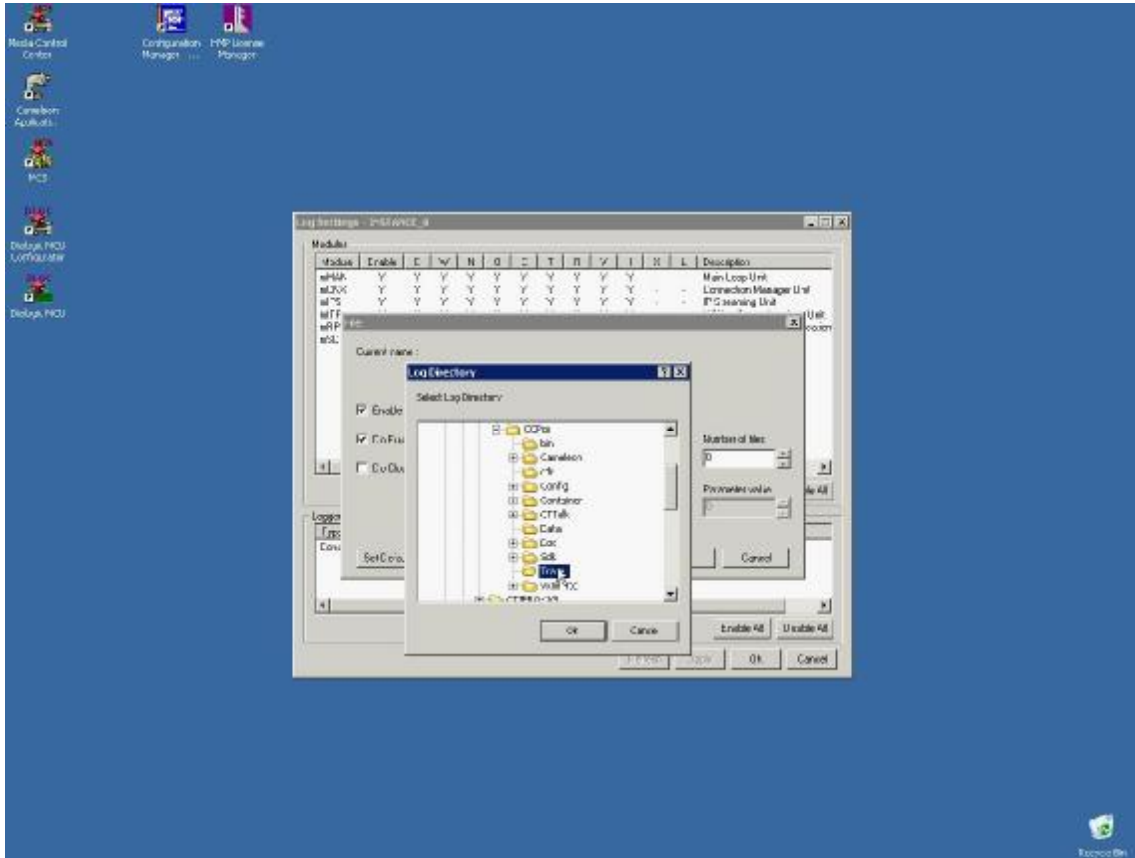
16. When configurator window appear, select HMP line and all DTI trunks bellow. Set trunk protocol for all of them (H323 or SIP) .



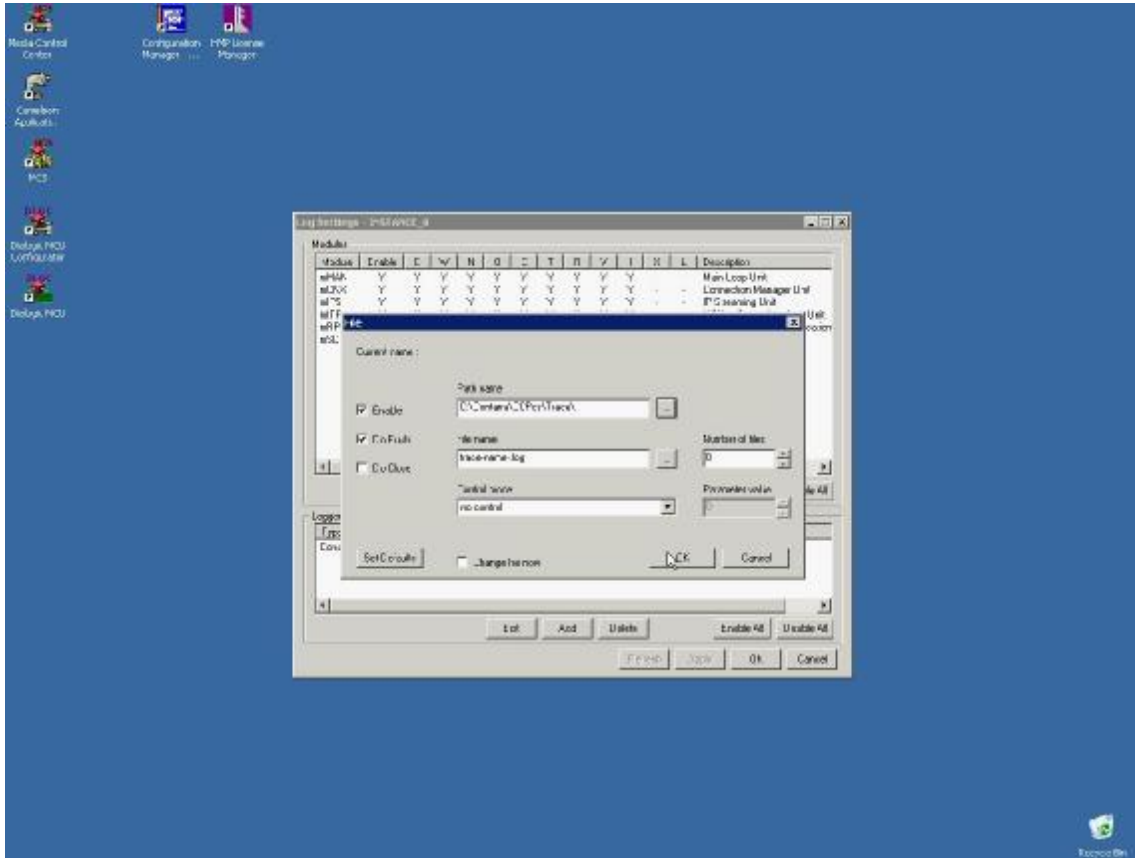
17. Click on „Log“ to enable trace logs.



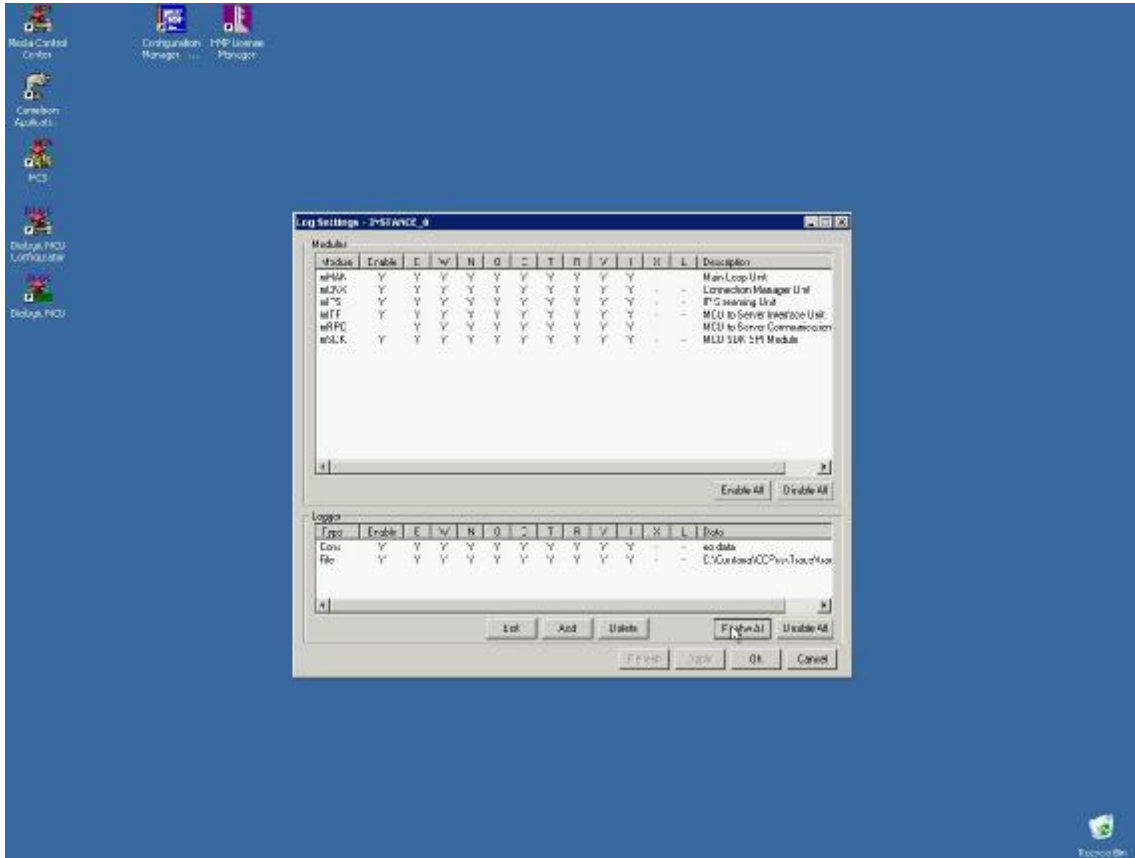
18. Add new console and/or file log.



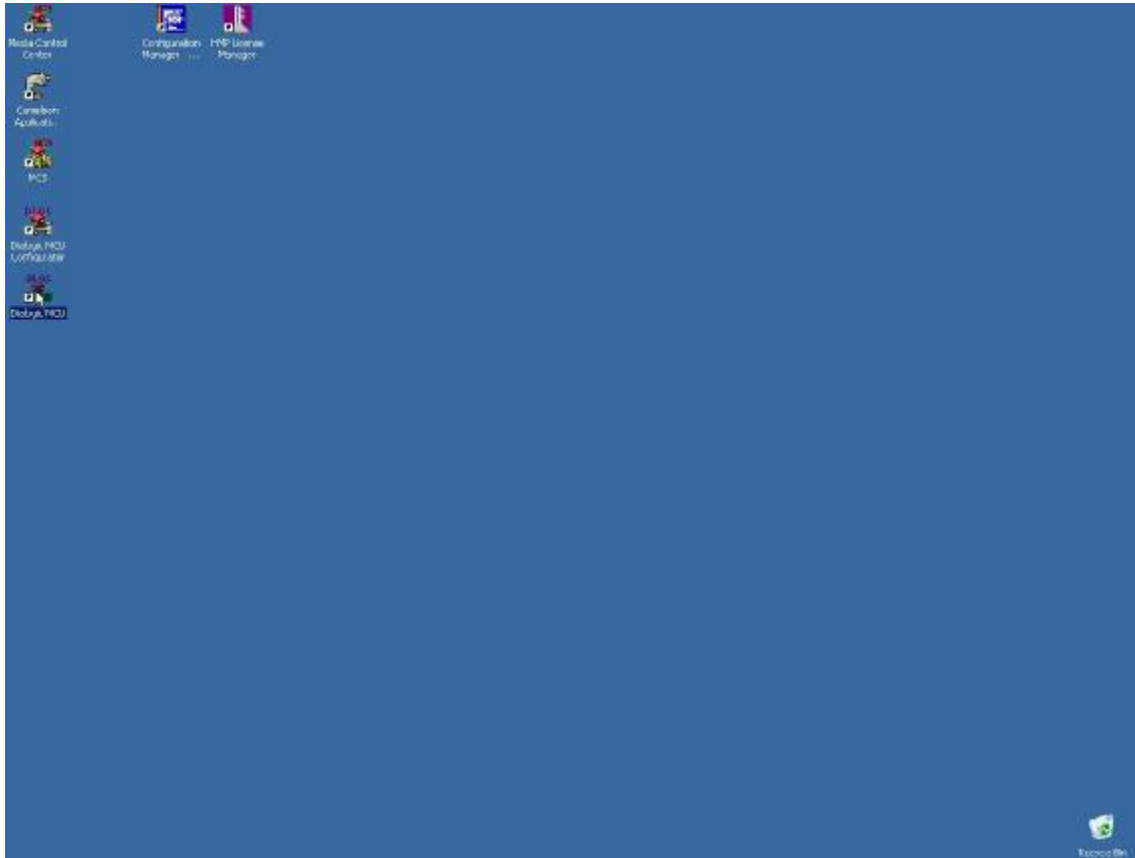
19. If you choose also file log, take care to set right directory where the logs will be stored.



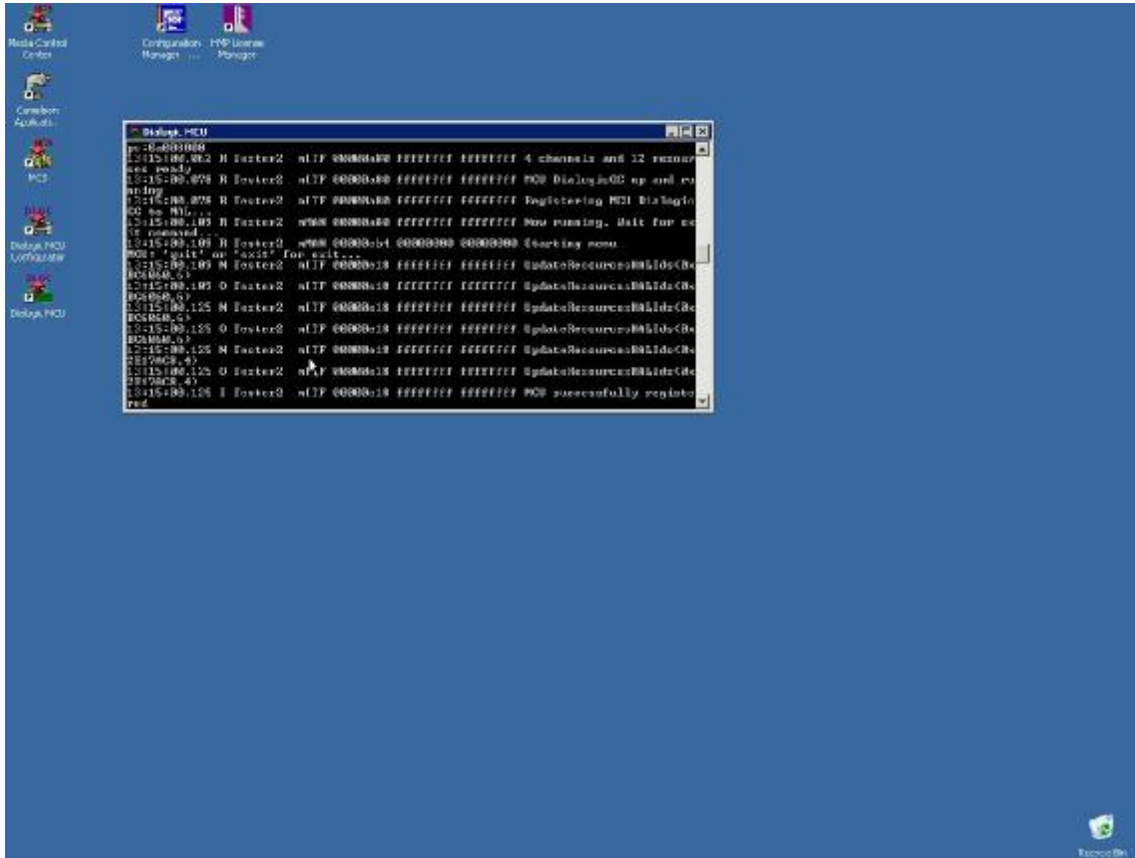
20. Confirm the log settings.



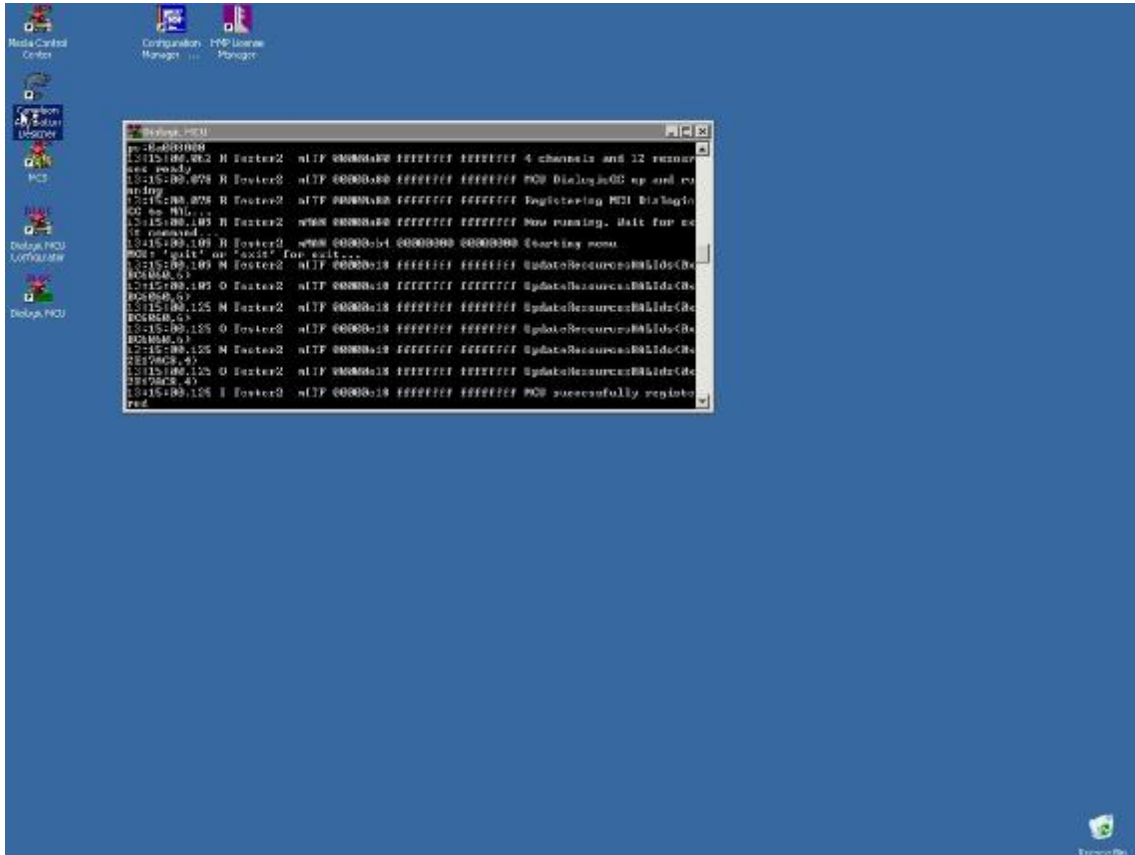
21. Enable logging.



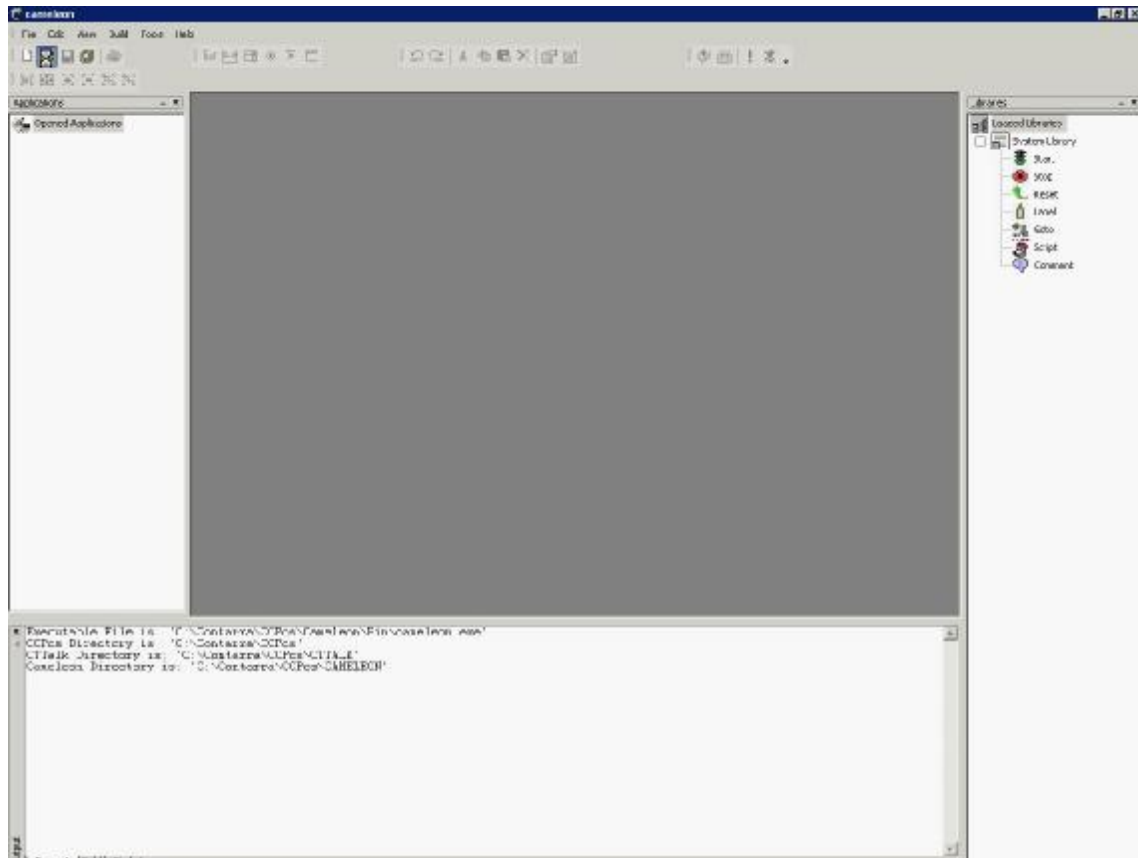
22. Run MCS and then Dialogic MCU.



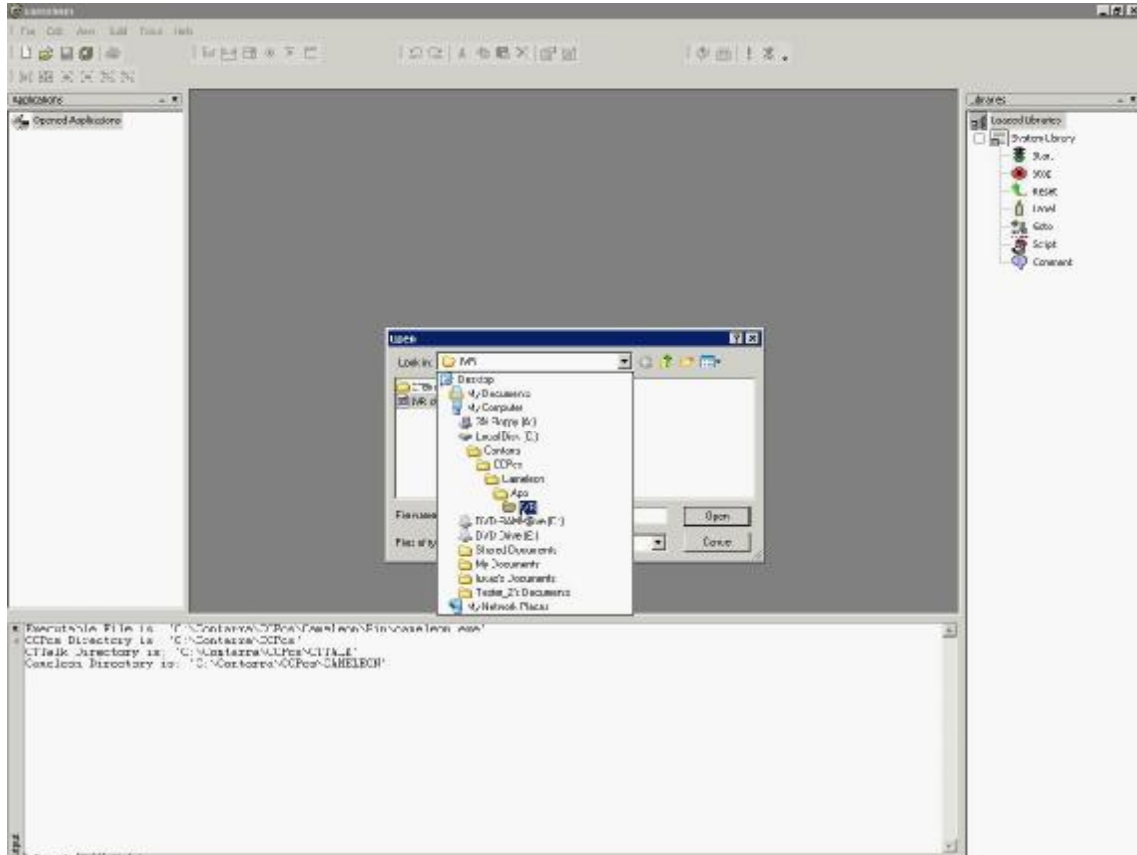
23. Screen like this one should appear („MCS successfully registered“).



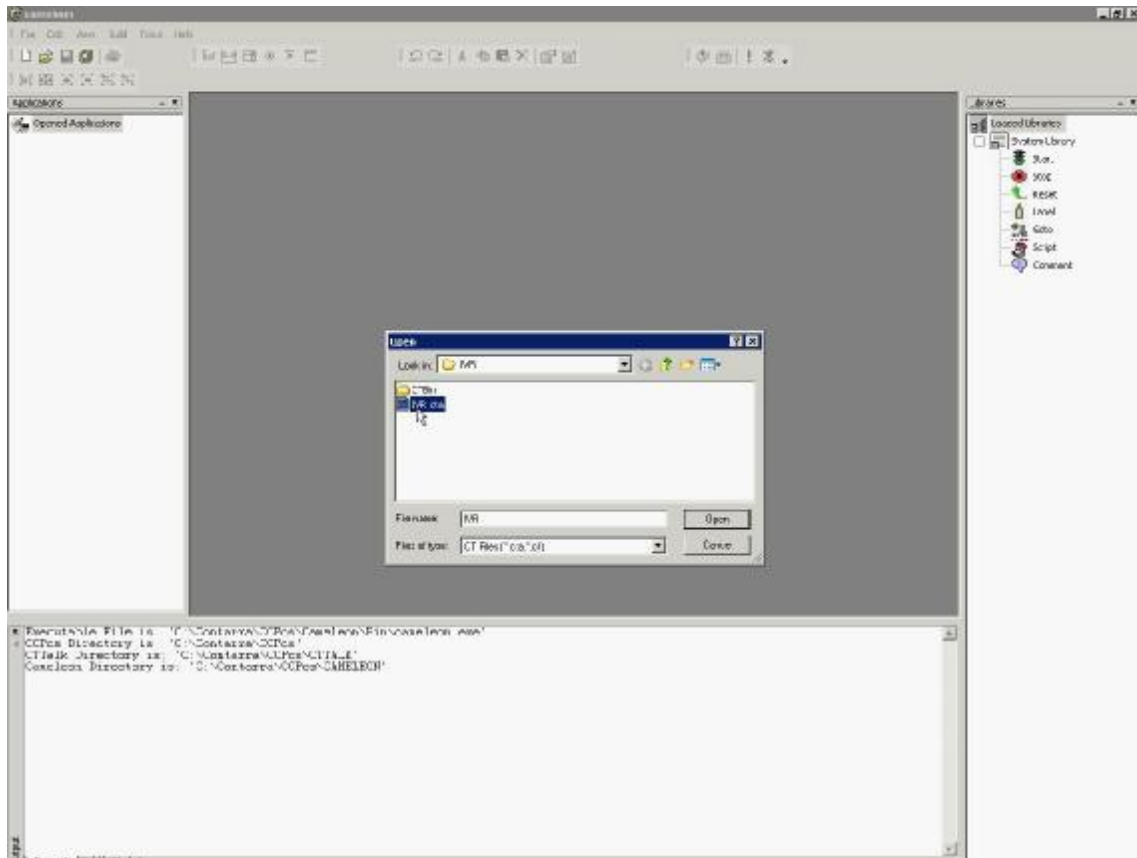
24. Now we can start Cameleon Application Designer.



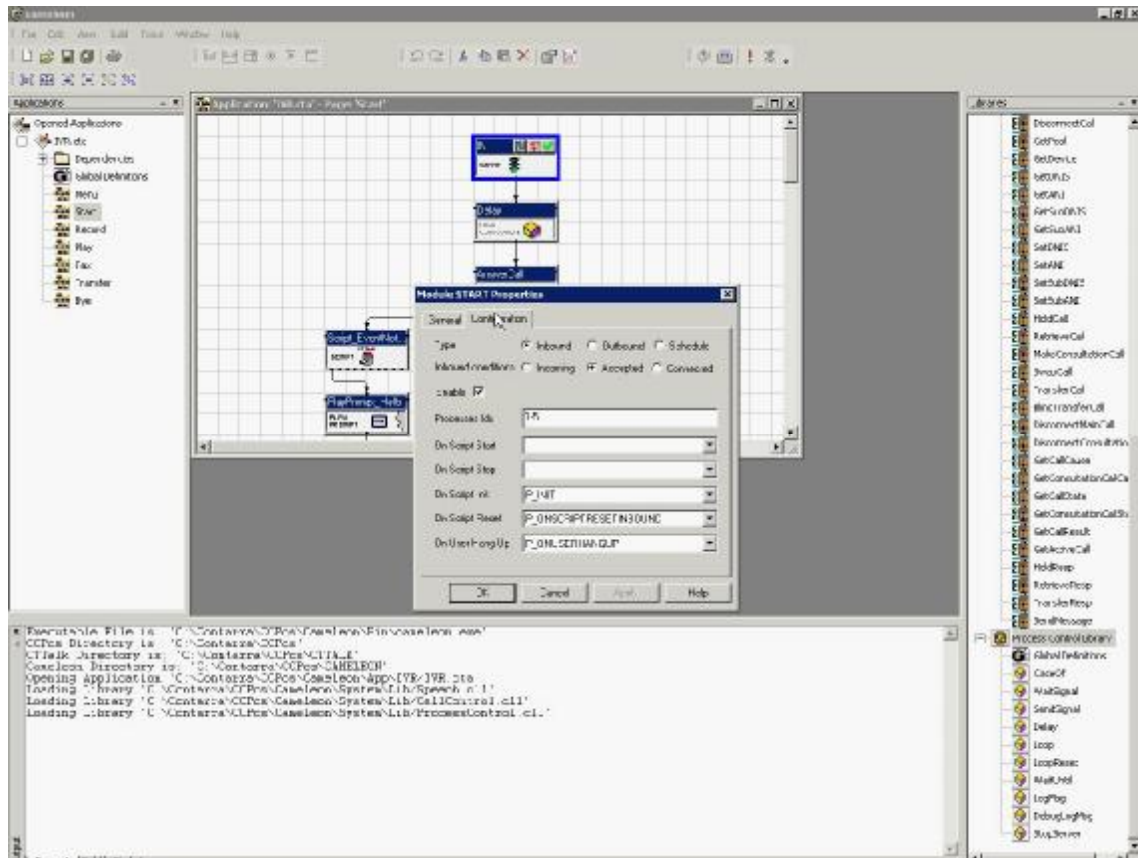
25. Click on „Open“ on the main toolbar.



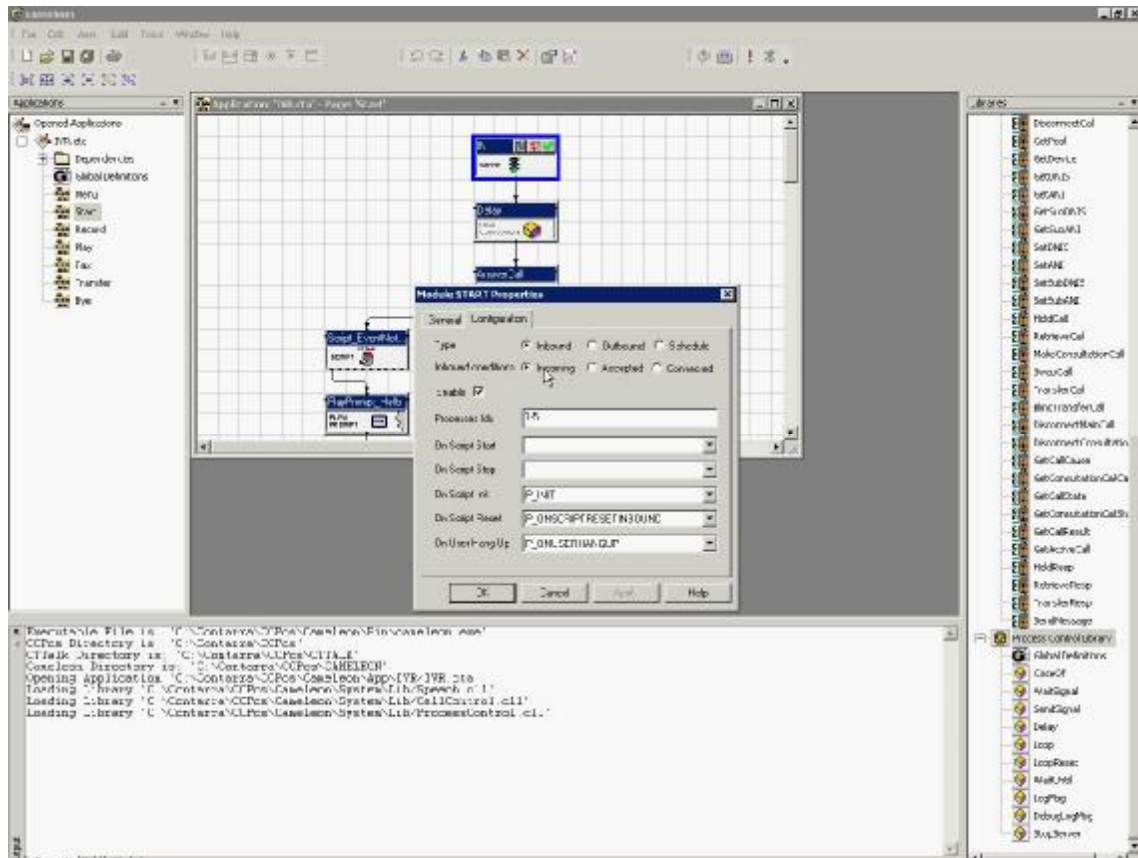
26. Browse for IVR demo (typically in C:\Contarra\CCPcs\Cameleon\App\IVR).



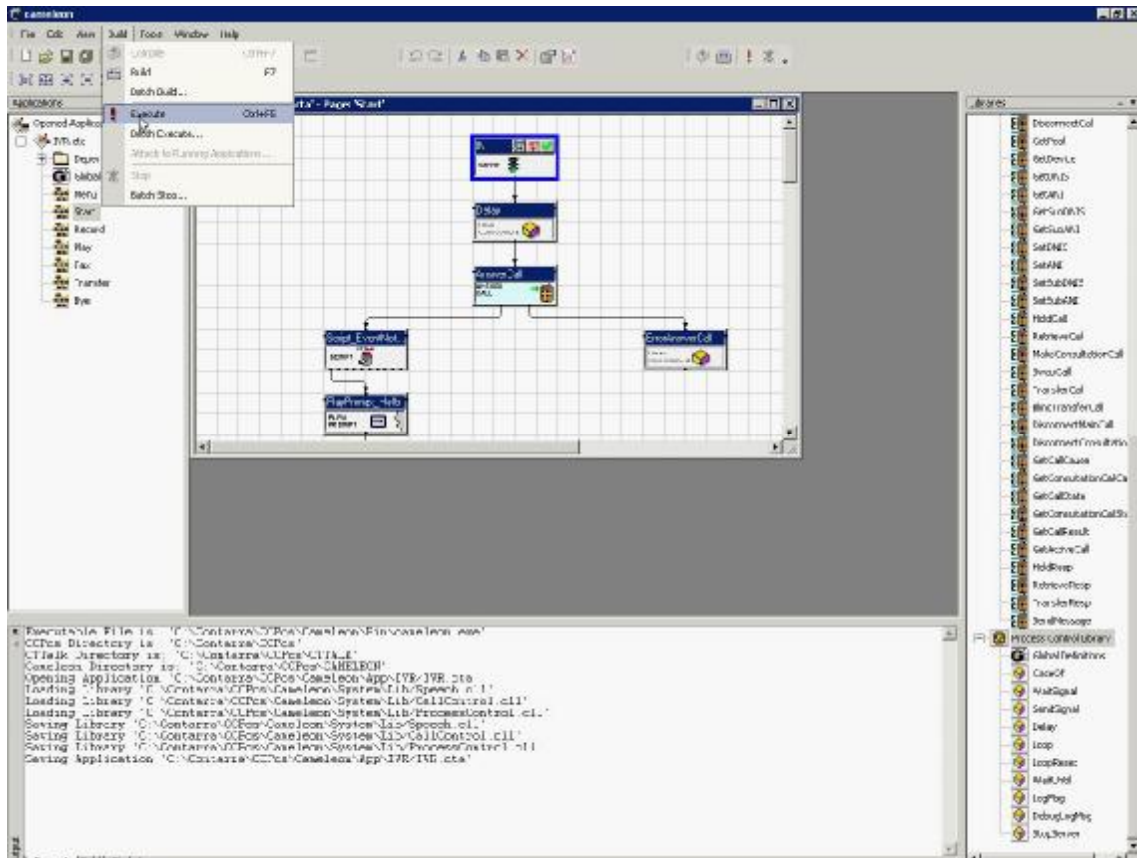
27. Open IVR.cta file.



28. Open „Start“ script and double-click on IN block.

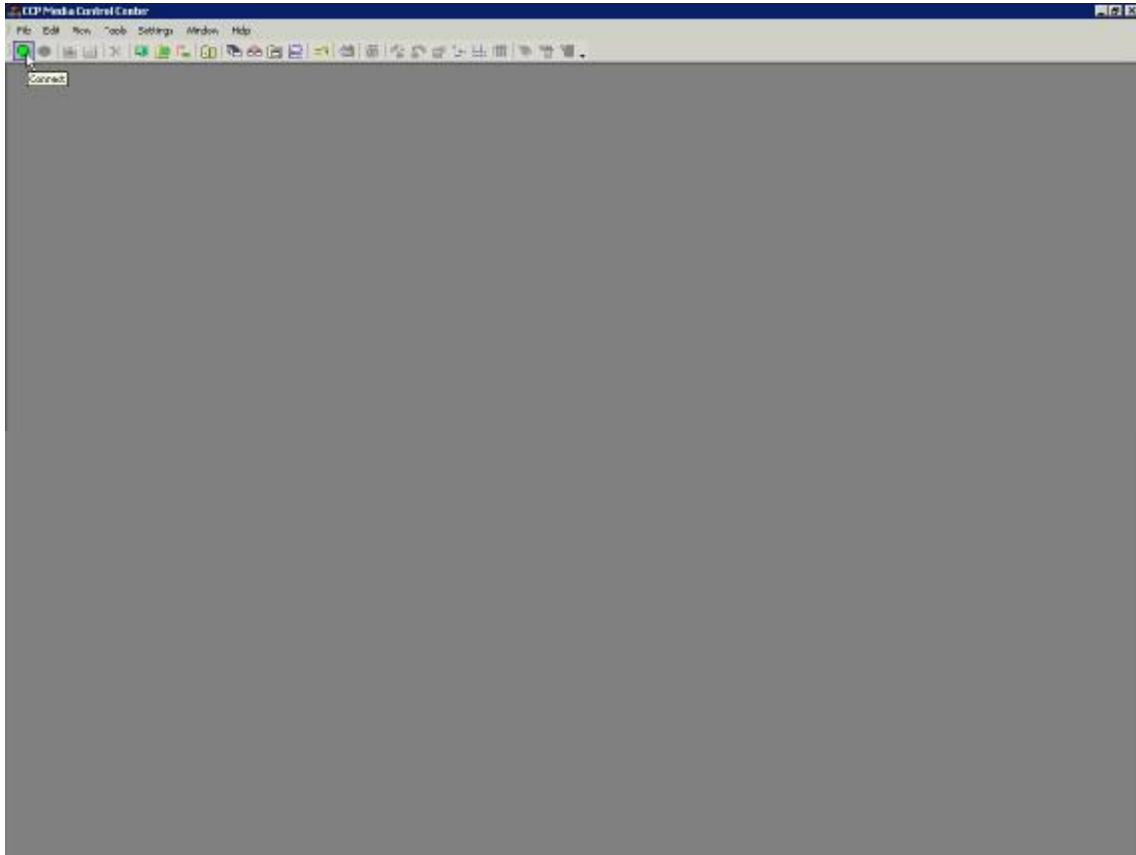


29. Go to „Configuration“ tab and change „Inbound condition“ to „Incoming“.

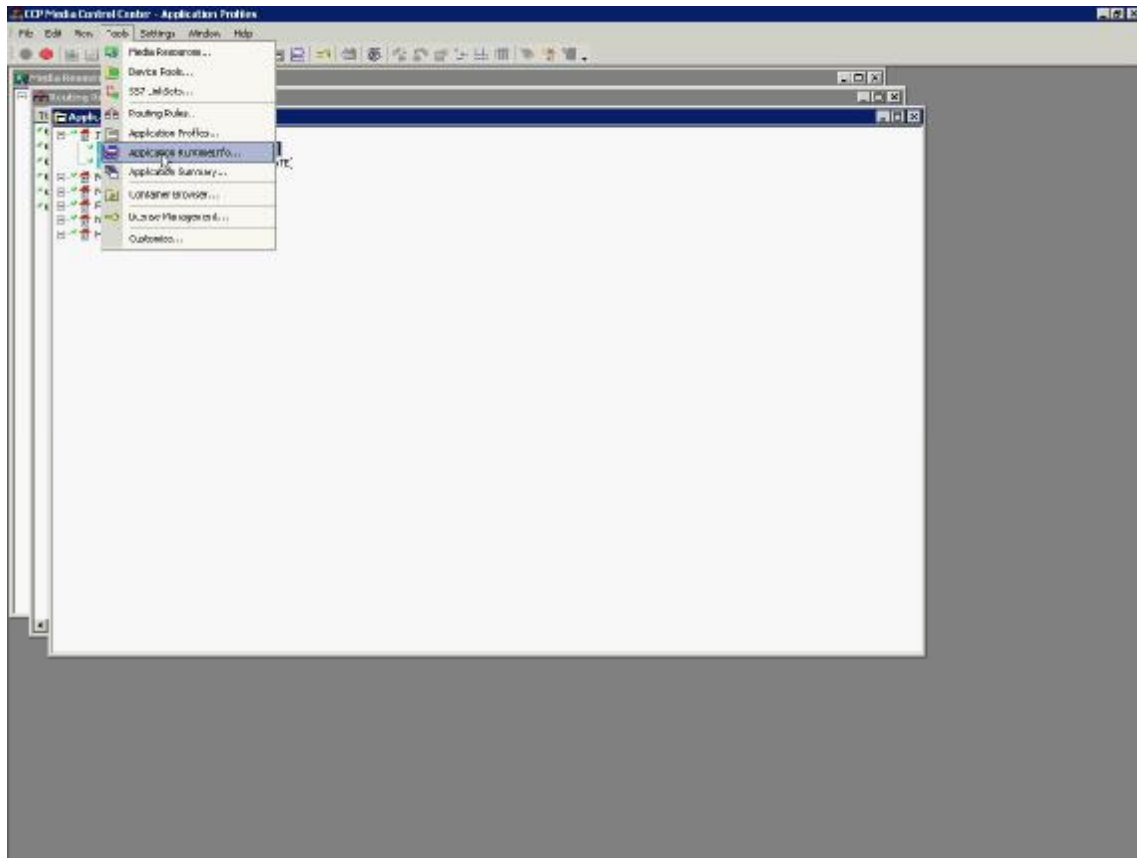


30. Now save the script changes and click on „Execute“ to start the script.

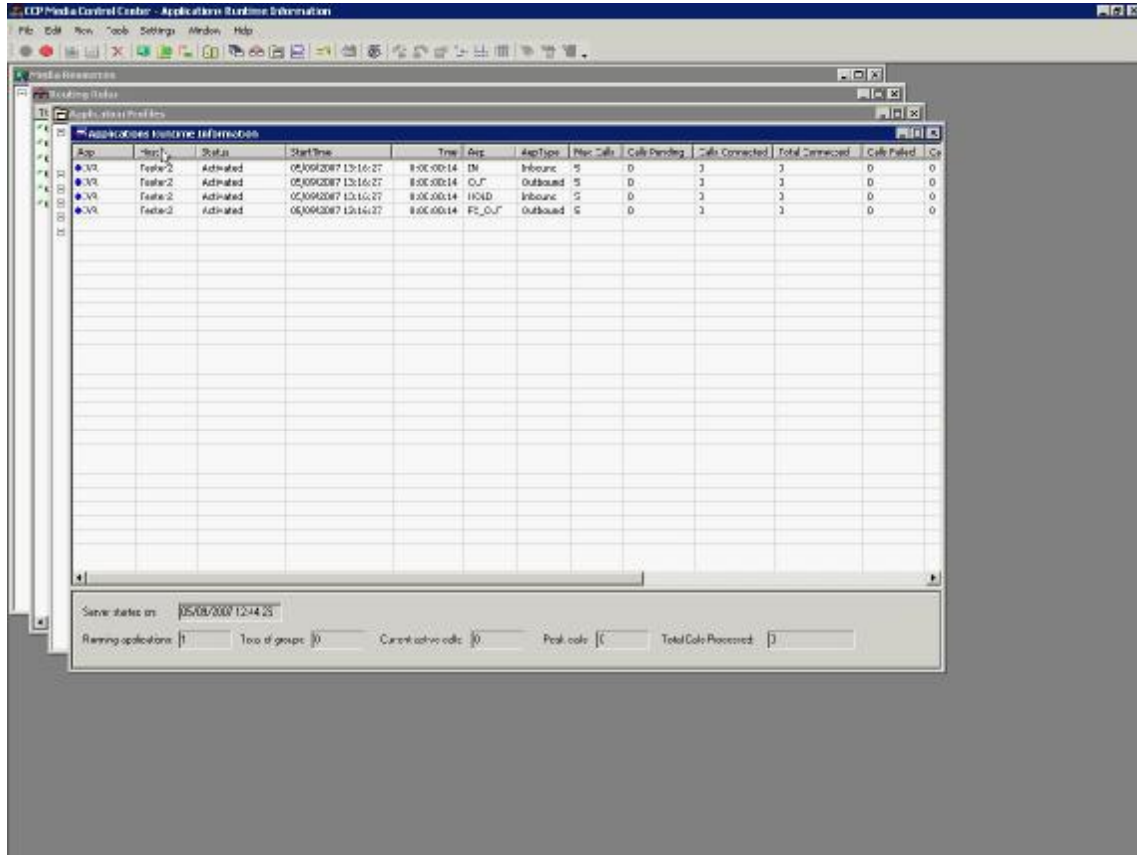




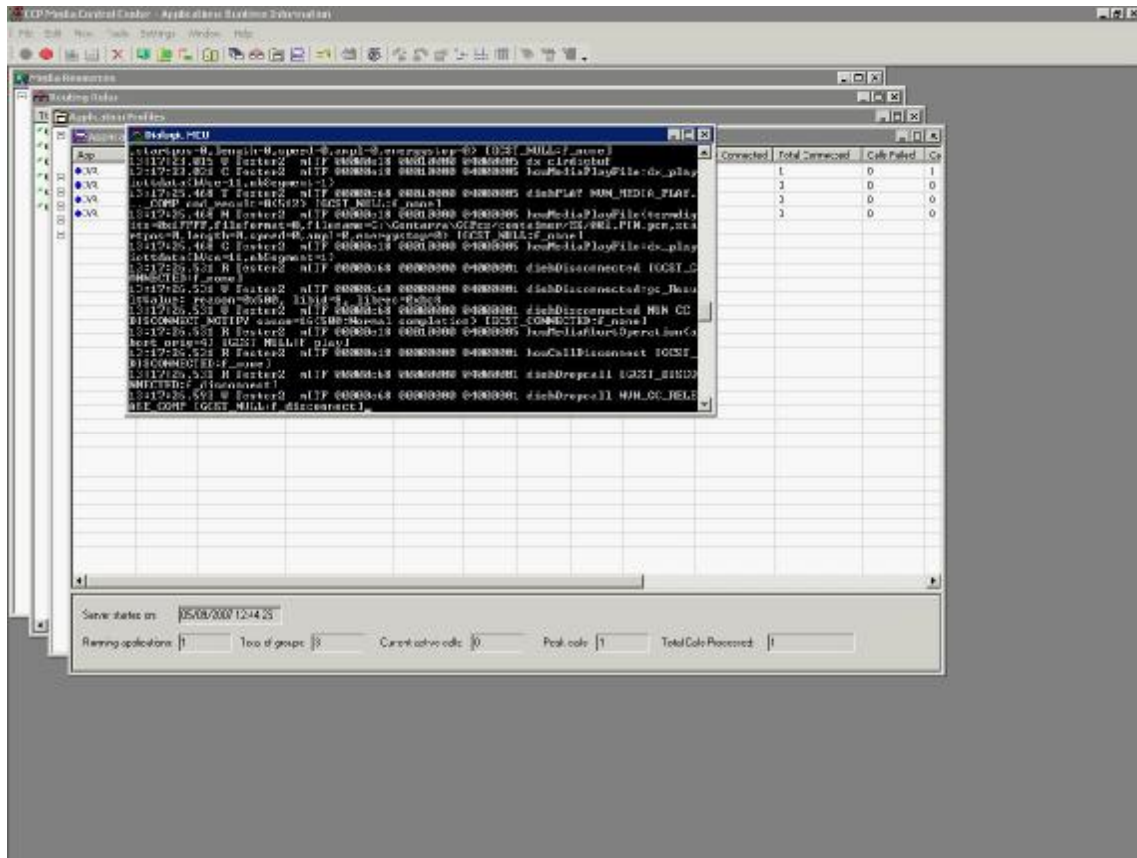
32. First click on green icon to connect to the MCS server.



33. Now click on Tools -> Application RuntimeInfo.



34. Windows with activated applications should appear.



35. Now we can try to call to our IVR demo using some IP phone (hardware or software – Xlite, Myrial, etc.)

**We are done!**

In case of any troubles with this tutorial or with Contarra® or Dialogic® products, feel free to contact us at [support@ctipro.cz](mailto:support@ctipro.cz)

In case of any other questions regarding this promotion or products mentioned in this tutorial contact our sales department at [sales@ctipro.cz](mailto:sales@ctipro.cz)

Thank you.